



SHROPSHIRE COUNTY  
COUNCIL

LCWIP Appendix:  
*Bridgnorth Delivery Plan*

---



**CITY SCIENCE**  
delivering decarbonisation



**Shropshire**  
Council

Date issued: 30/05/2024

Document status: Final

Version number: 1.2

Version Number	Date	Summary
V1.0	20/01/2023	Final Draft LCWIP (Pre-Consultation)
V1.1	12/02/2024	Final LCWIP
V1.2	30/05/2024	Final LCWIP (Post-Client Comments)

**Prepared by:**

Aoife Dudley BA Principal Transport Consultant

Rifat Foysal BSc Graduate Transport Consultant

**Approved by:**

Simon Lusby CTPP BSc MET Managing Director

*This Report has been prepared by City Science Corporation Limited with reasonable skill, care and diligence. This Report has been prepared for Shropshire County Council and should not be shared with any third parties, nor reproduced in whole or in part, without the prior written approval of City Science Corporation Limited.*

## Contents

<b>1</b>	<b>Introduction</b> .....	<b>1</b>
1.1	Bridgnorth Context & Study Area .....	1
1.2	Geographical Scope .....	5
1.3	Report Structure .....	5
<b>2</b>	<b>Stakeholder Engagement</b> .....	<b>6</b>
2.1	Overview .....	6
2.2	Stakeholder Survey .....	6
2.3	Site Visit & Workshop .....	6
2.4	Public Consultation .....	7
<b>3</b>	<b>Network Planning for Cycling</b> .....	<b>8</b>
3.1	Existing Cycling Network.....	8
3.2	Stakeholder Engagement.....	12
3.3	Cycle Route Selection – Route Alignment of Cycle Routes .....	13
3.4	Proposed Routes.....	13
<b>4</b>	<b>Network Planning for Walking</b> .....	<b>23</b>
4.1	Core Walking Zone Analysis .....	24
4.2	Core Walking Zone Improvements .....	29
<b>5</b>	<b>Prioritisation Results</b> .....	<b>30</b>
5.1	Top Performing Schemes.....	30
5.2	Prioritised Routes .....	32
<b>6</b>	<b>Appendix: Full Prioritisation Results</b> .....	<b>34</b>
<b>7</b>	<b>References</b> .....	<b>38</b>

# 1 Introduction

This appendix summarises the process of identification of the cycle network and Core Walking Zones (CWZs) for Bridgnorth, including setting out in detail the network planning and prioritisation stages of the Shropshire LCWIP as relevant to Bridgnorth.

## 1.1 Bridgnorth Context & Study Area

Bridgnorth is an old town dating back to the 13<sup>th</sup> century. It's located around the River Severn and is named after the bridge that crosses it. It is visited by thousands every year, attracted by the River Severn and its associated walks as well as the Severn Valley Railway which terminates in the town.

### 1.1.1 Population

The population of Bridgnorth is 12,657 (ONS, 2015). The population is 49.1% male and 50.9% female. There is a similar age profile in Bridgnorth compared to the wider county, with 22% of people aged over 65 compared to 21% of people in Shropshire as a whole. Accordingly, Bridgnorth has a similar proportion of residents of traditional working age (16-64) at 63% of the population compared to 62% of residents in the whole of Shropshire, 64% in the West Midlands and 65% in England (Figure 1-1).

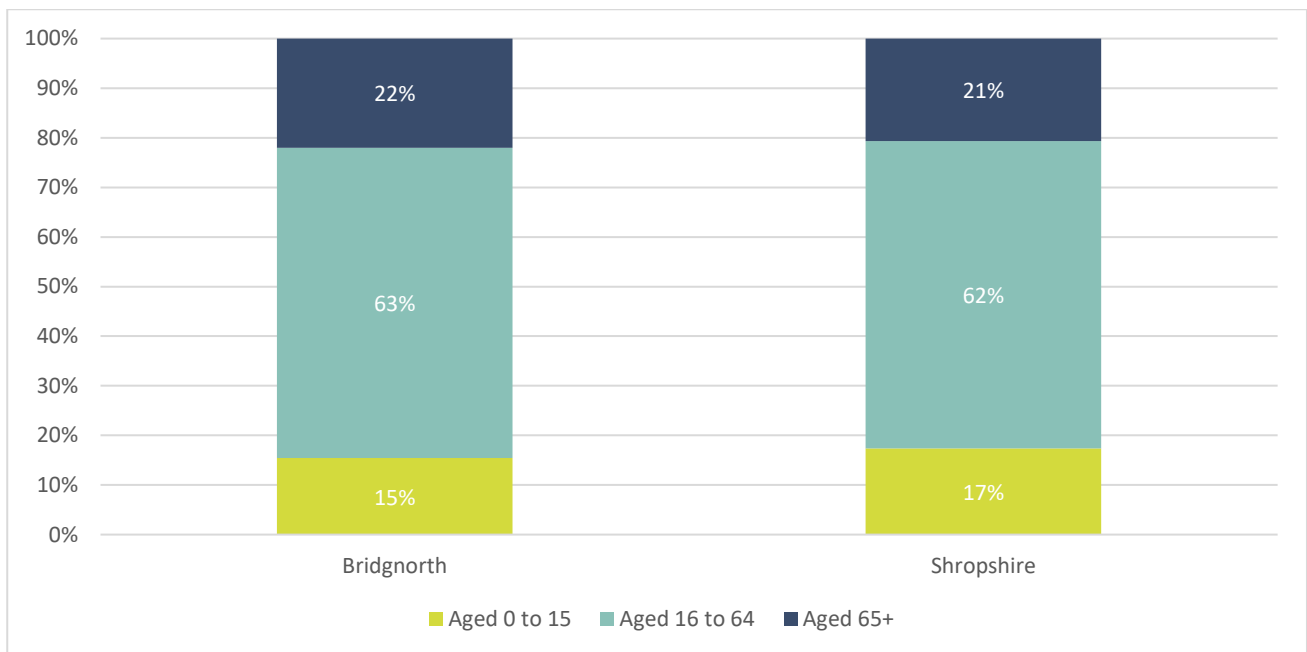


Figure 1-1: Demographic Profile of Bridgnorth Compared to Shropshire

### 1.1.2 Population Density

The majority of the town and surrounding area has relatively low population density compared to the rest of the county, however the north west corner around Victoria Road has a higher density of 5,000 people per km<sup>2</sup> (see Figure 1-2).

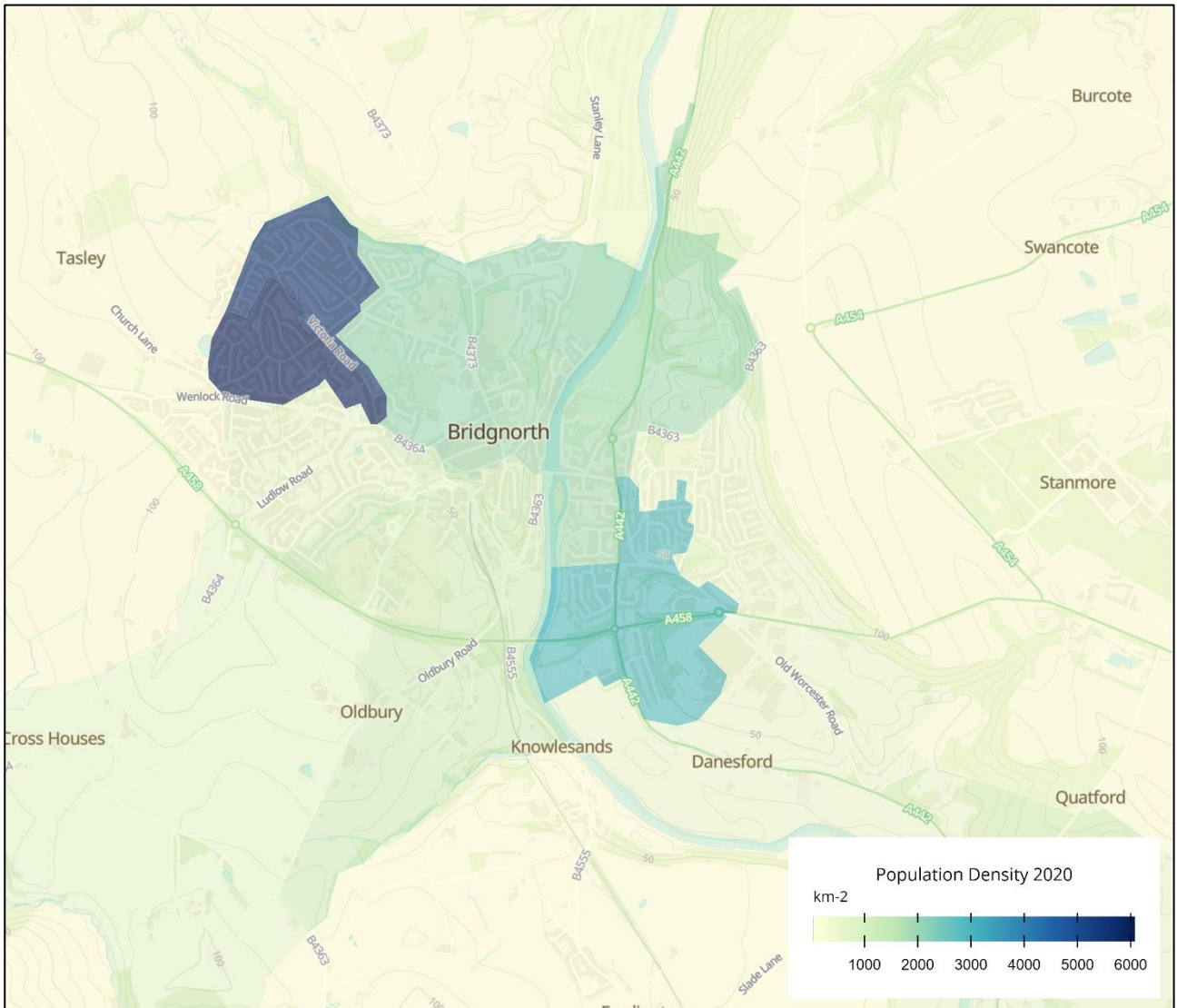


Figure 1-2: Population Density around Bridgnorth

### 1.1.3 Deprivation

Bridgnorth has mostly low levels of deprivation with the most deprived areas being a small area to the west of the town and the larger area to the east (see Figure 1-3).

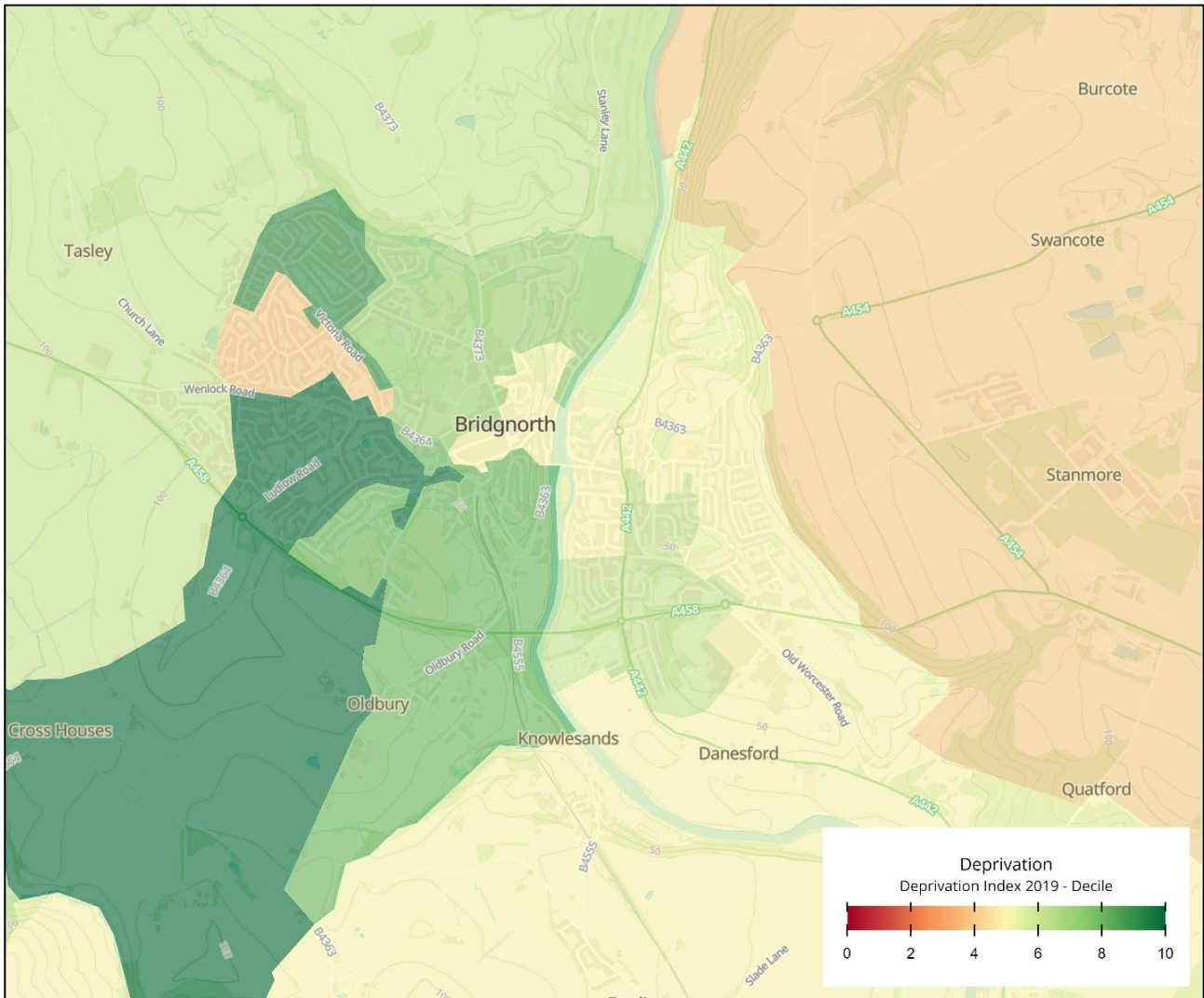


Figure 1-3: Deprivation Indices around Bridgnorth

### 1.1.4 Mode Share – Travel to Work

The mode share for commuting (Nomis, 2011) shows that there is a slightly lower mode share for travel to work by bicycle (2%) compared to Shropshire as a whole (3%) but a higher mode share for walking to work (17%) compared to Shropshire as a whole (13%) (Figure 1-4). This may reflect the compact, walkable nature of Bridgnorth.

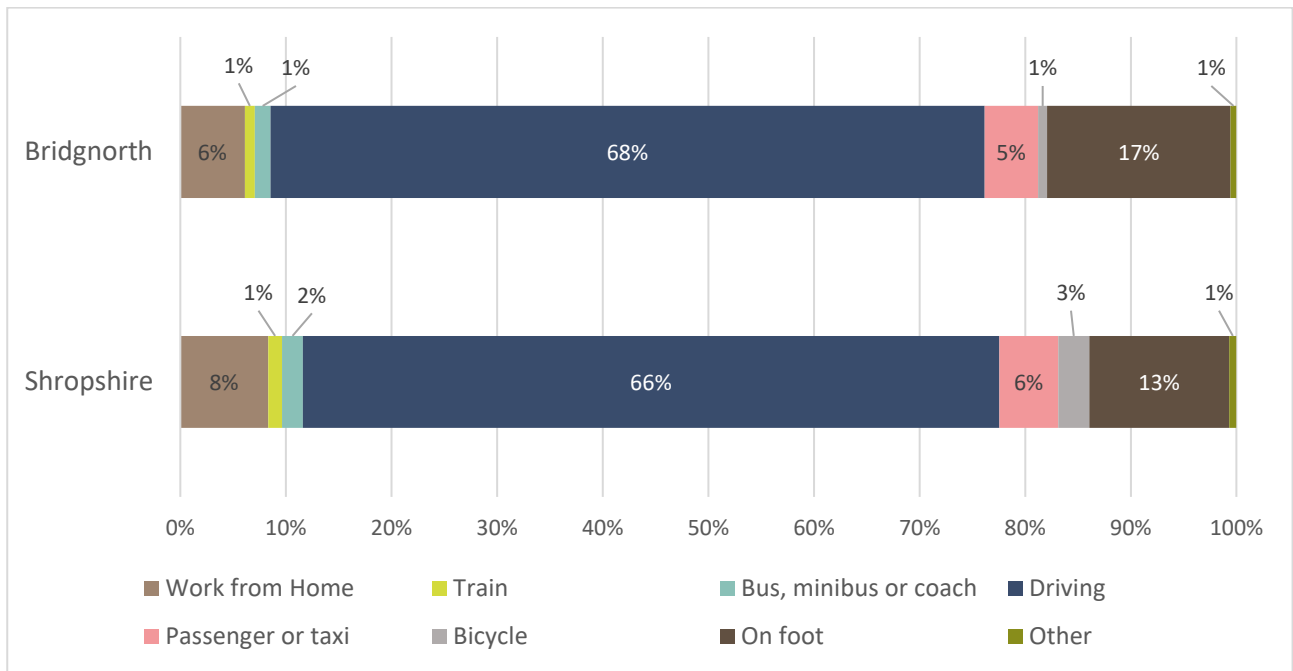


Figure 1-4: Commuting Mode Share in Bridgnorth Compared to Shropshire

Over a quarter (27%) of Bridgnorth residents’ commutes are under 2km, 7% are between 2km and 5km and 4% are between 5-10km (Figure 1-5). This indicates that there is potential for nearly half of commuting journeys to be made by active modes.

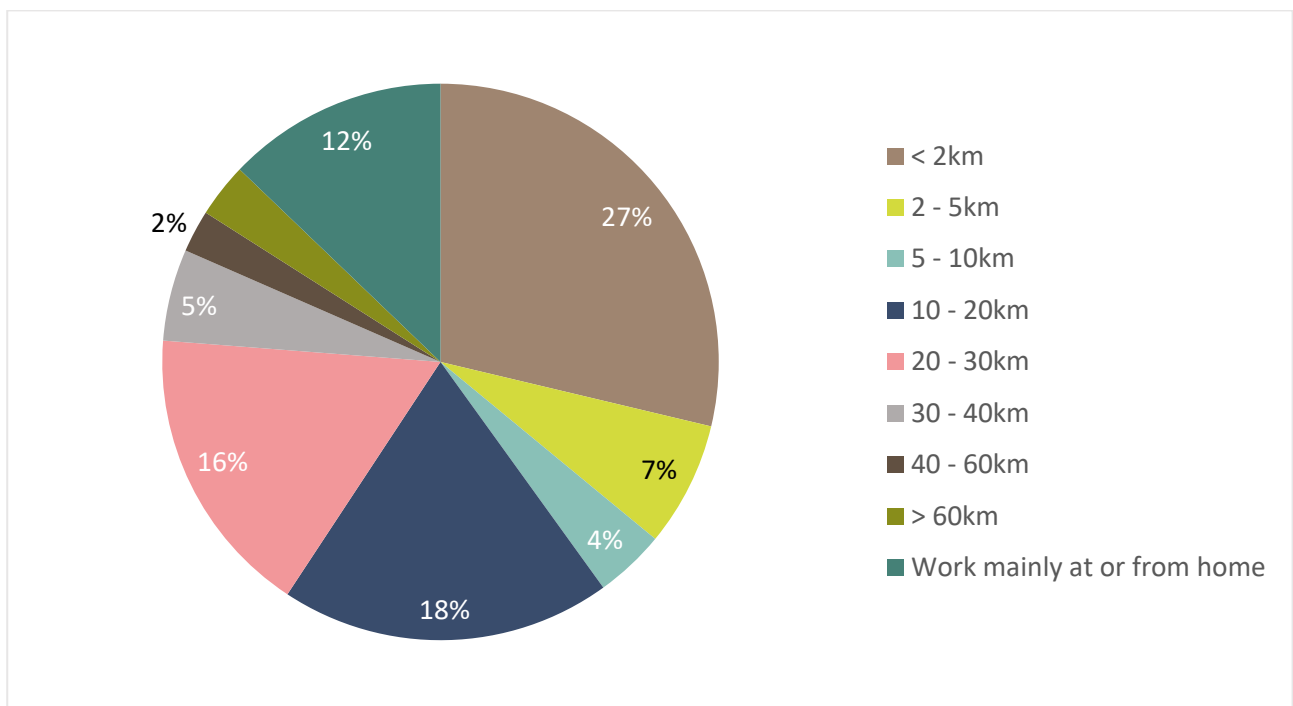


Figure 1-5: Commuting Distances in Bridgnorth

### 1.1.5 Topography

Bridgnorth is divided into the Low Town and the High Town. High Town is perched on the cliffs 100ft above the Low Town. There is a funicular railway joining the two, however the topography presents a significant barrier for the use of active travel to get between the two parts of the town. The increasing popularity of electric bikes may have the potential to reduce the effects of this barrier, but the majority of walking, wheeling and cycling journeys are likely to be made within the two separate parts of the town independently.

## 1.2 Geographical Scope

As per the Department for Transport’s (DfT) LCWIP Guidance (DfT, 2017), the network planning for Bridgnorth has been carried out within 10km from the town centre for cycling and 2km for walking which encapsulates the whole of the town and surrounding settlements. The area this covers is shown in Figure 1-6.

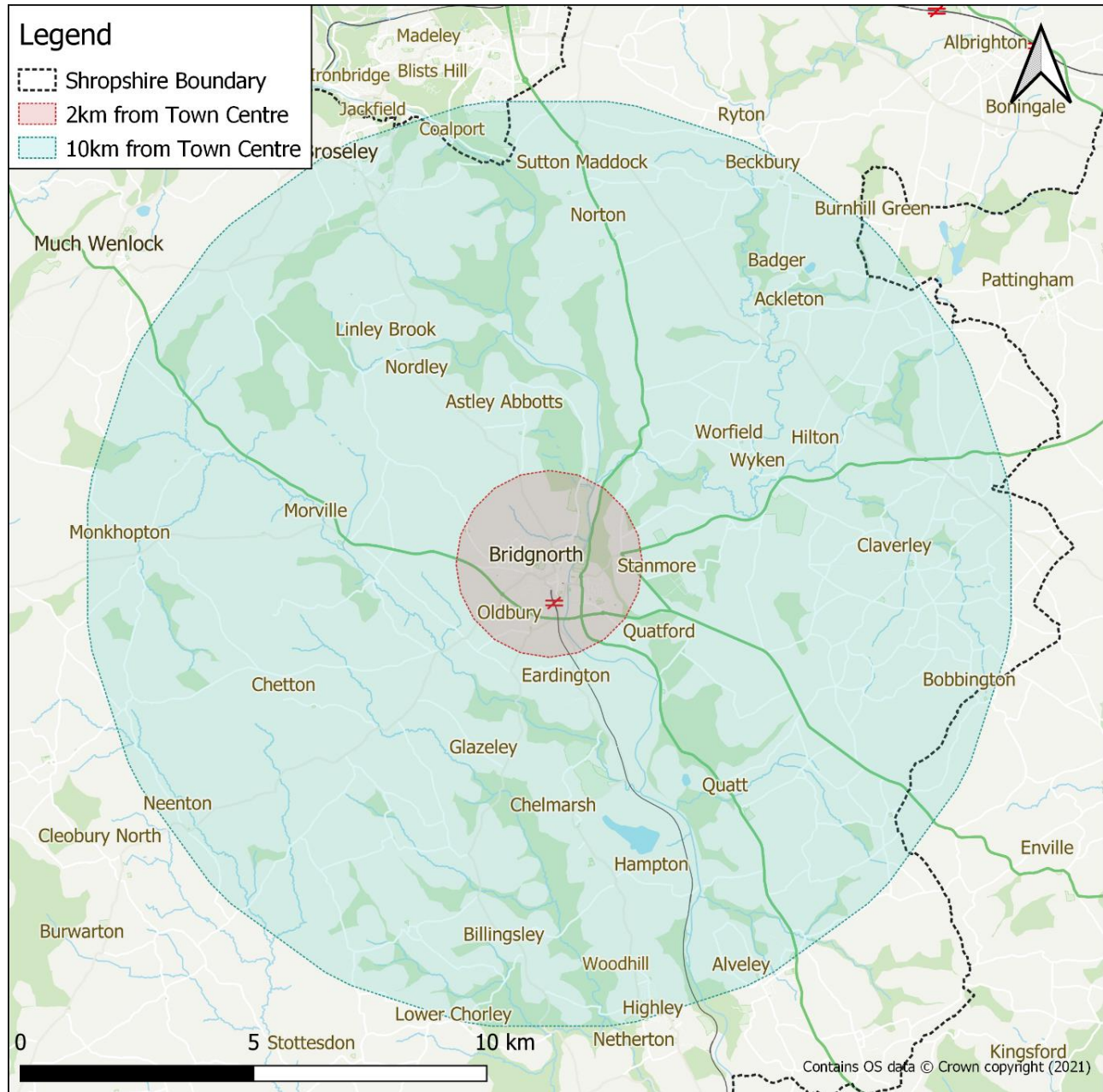


Figure 1-6: Study area for Bridgnorth

## 1.3 Report Structure

Following this chapter, this report has been structured in the following way:

- **Chapter 2:** Stakeholder Engagement
- **Chapter 3:** Network Planning for Cycling
- **Chapter 4:** Network Planning for Walking
- **Chapter 5:** Prioritisation Results



## 2 Stakeholder Engagement

### 2.1 Overview

As discussed in the main LCWIP report, stakeholder engagement was fundamental to the development of the LCWIP. As such, engagement was carried out at multiple points throughout its development (See Section 4 of the main Shropshire LCWIP report for more detail).

### 2.2 Stakeholder Survey

As part of the Evidence Gathering stage (Stage 2), a survey was circulated to key stakeholder groups in Bridgnorth (see Table 2-1 Table 2-1: Stakeholder groups contacted through Bridgnorth Stakeholder Engagement activities for the full list of stakeholder groups contacted) to capture their views on network-wide opportunities and constraints for active travel.

Stakeholder Groups Contacted During Stakeholder Engagement
Astley Abbots Parish Council
Bridgnorth East & Astely Abbots Councillor
Bridgnorth Town Council
British Horse Society
Ditton Priors Parish Council
Living Streets
National Trust
Quatt Malvern Parish Council
Shropshire Council Officer
Sustainable Transport Shropshire
Sustrans
Tasley Parish Council

Table 2-1: Stakeholder groups contacted through Bridgnorth Stakeholder Engagement activities

Table 2-2 shows some of the feedback that was collected on the current walking and cycling provision in and around Bridgnorth. Using this survey, individual concerns were aggregated to prioritise areas of interest as well as recommendations.

Question: How would you rate the current walking & cycling networks on the following criteria?	Score (5 = Excellent, 1 = Very Poor)
<b>Coherence</b> (how easy it to use and navigate to access key day-to-day destinations)	2.3
<b>Directness</b> (how direct are routes compared to routes for vehicles)	2.3
<b>Safety</b> (how safe do the routes feel to use)	1.9
<b>Comfort</b> (to what extent are routes good quality, well-maintained, of a suitable width and avoid steep gradients)	1.7
<b>Attractive</b> (to what extent are routes enjoyable to use and spend time in e.g. adjacent to nature)	2.6

Table 2-2: Survey results on the current state of the walking and cycling networks in and around Bridgnorth

### 2.3 Site Visit & Workshop

Once key data and feedback had been processed from Stage 2, a desktop audit of the area, a local workshop and a site visit were undertaken in Bridgnorth to gain a better understanding of the area

and to identify key barriers to walking and cycling. The local workshop (which was held on 18<sup>th</sup> January 2022) provided stakeholders with context of the LCWIP development process and helped confirm, as well as add to, the findings of the desktop audit. The objectives of the workshop were to:

- Present and gather feedback on the evidence base for Bridgnorth
- Seek feedback on the identification of the Core Walking Zone (CWZ) and Key Walking Routes both to and within the CWZ (see Chapter 4)
- Identify key opportunities for walking improvements and cycling schemes (see Chapters 3 & 4)
- Seek feedback on cycle desire lines (see Chapter 3)

A site visit, attended by some workshop participants, was held on the 17<sup>th</sup> of February 2022. The stakeholder input helped to provide detailed insights into the biggest problems residents face when walking, cycling and using other active modes to travel around Bridgnorth.

After the workshop and site visit, a further survey was sent out to those stakeholders that attended the workshop to capture their feedback on the emerging proposals for the draft cycling network and CWZ. The feedback received helped further refine the route proposals prior to undertaking the prioritisation process (see Chapter 5).

## 2.4 Public Consultation

Shropshire Council ran a public consultation over a period of six weeks from Tuesday 2<sup>nd</sup> May to Tuesday 13<sup>th</sup> June 2023. The purpose of this consultation was to listen to what local people thought about the draft plans we developed for improving the walking and cycling network across the seven towns. During this period, a number of different events were run to ensure a wide range of people were given the opportunity to participate. This section gives an overview of the results of the consultation for Bridgnorth. The feedback has been used to refine the schemes included in this final LCWIP appendix.

### 2.4.1 Survey Results

A total of 77 survey responses were received in response to the Bridgnorth walking and cycling proposals. The survey asked questions about the respondents' views on the objectives, their main barriers to walking and cycling in Bridgnorth, and on the specific walking and cycling proposals.

The responses indicate that 'zero carbon' is the most important objective for Bridgnorth, followed by 'healthier'. In terms of barriers to active travel, poor maintenance of surfaces causes problems for both pedestrians and cyclists, as well as the practicalities of needing to carry things. The topography was a significant issue raised against cycling, with the steep inclines between High and Low Towns highlighted as a barrier.

### 2.4.2 In-Person Roadshow

The Roadshow for Bridgnorth was held on the afternoon of Wednesday 10<sup>th</sup> May 2023 on the High Street.

Primary discussions were in relation to use of the high street (including foot cycling), links between the upper and lower towns, enhancements of active travel on the bypass, queries in relation to point closures and linkages to growth areas.

### 3 Network Planning for Cycling

#### 3.1 Existing Cycling Network

Bridgnorth has no existing cycle infrastructure. National Cycle Route 45 ends in Upper Forge to the south and resumes north of the Bridgnorth Golf Course (see Figure 3-1). This shows the importance of delivering high quality walking and cycling infrastructure across the town to provide both local and long-distance connectivity.



Figure 3-1: National Cycle Route around Bridgnorth

In order to identify routes and close the existing gaps, a network of preferred routes has been defined for Bridgnorth drawing on an analysis of the following data:

- Trip Origins Points (see Section 3.1.1)
- Trip Destination Points (see Section 3.1.2)
- Accessibility Catchment Analysis (see Section 3.1.3)
- Desire lines for cycle movement (see Section 3.1.4)
- Stakeholder Engagement (see Section 3.2)
- Cycle Route Selection: Route alignment of cycle routes (see Section 3.3)

### 3.1.1 Trip Origin Points

Trip origin points generally consist of residential areas which generate the most travel demand and therefore present the greatest potential to achieve a shift to active modes (DfT, 2017). As indicated in Figure 3-2, 12 key origin areas have been identified in Bridgnorth, which reflect both the existing resident population density as well as future population density through delivery of allocated residential developments identified in the emerging Shropshire Local Plan (2016 – 2038).

### 3.1.2 Trip Destination Points

Trip destination points constitute common trip generating land uses such as town centres, key employment areas and other amenities such as schools, community and healthcare facilities (DfT, 2017). As indicated in Figure 3-2, five key trip destination areas have been identified within Bridgnorth through consolidation of a variety of data sources including land use, commuting trip origin-destination pairs from the 2011 Census, and local knowledge gained through stakeholder engagement and an on-site audit.

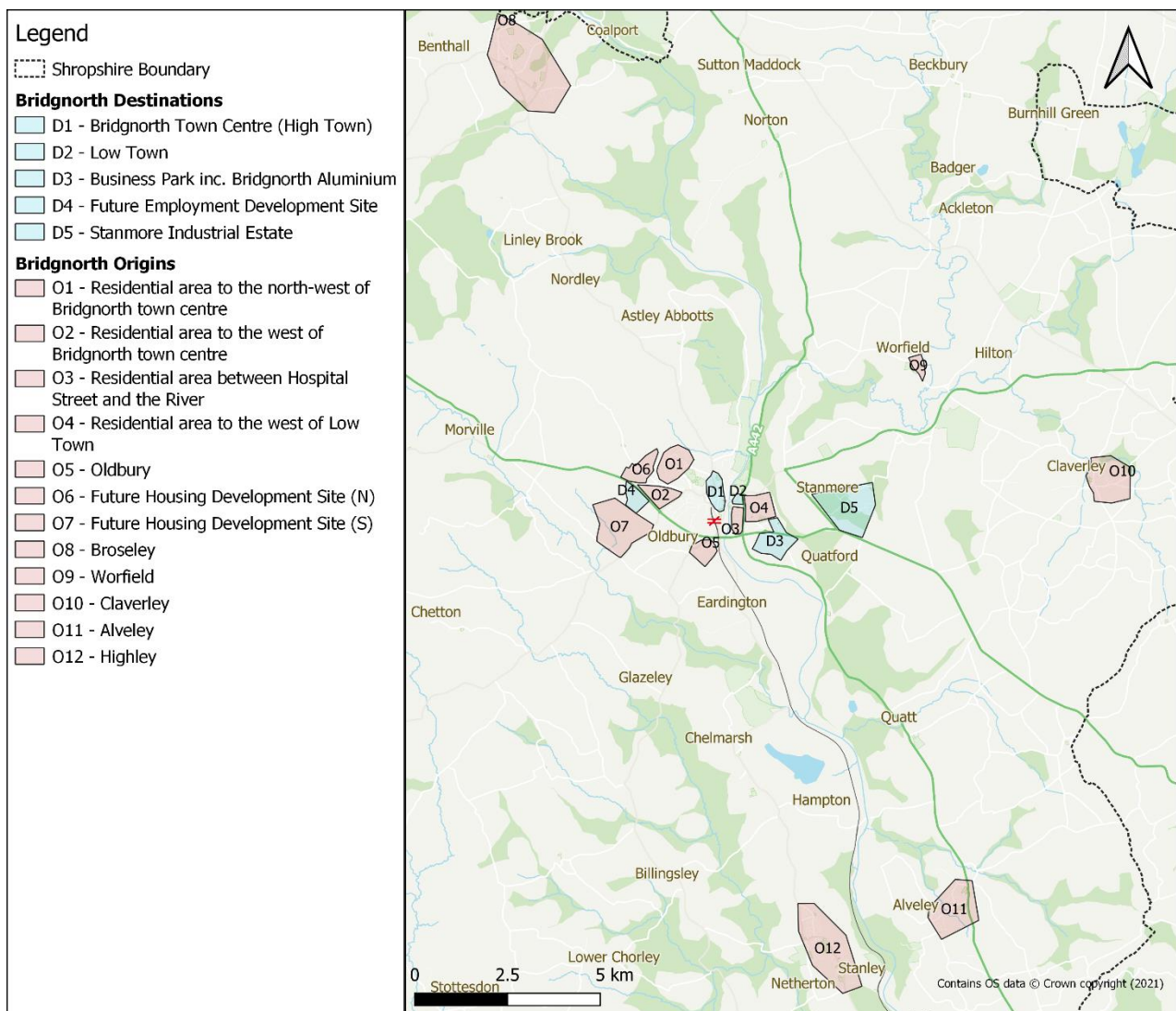


Figure 3-2: Trip Origins and Destinations around Bridgnorth

### 3.1.3 Accessibility Catchment Analysis

An analysis of the time taken to cycle to key origin points and key destination points from the town centre was undertaken. This analysis, alongside other evidence (see the LCWIP Main Report, Section 5.1.2) helped inform the identification of desire lines (see Section 3.1.4). A maximum cycle journey time of 30-minutes was applied (this is the time it takes the average person to cycle 10km). The accessibility analysis revealed:

- All of Bridgnorth’s residential areas are within a 10-minute cycle of the town centre
- Tasley and Eardington are within a 15-minute cycle of the town centre
- Accessibility is generally good in all directions from the town, however, there is a barrier to the south west which prevents access past the 20-minute mark altogether

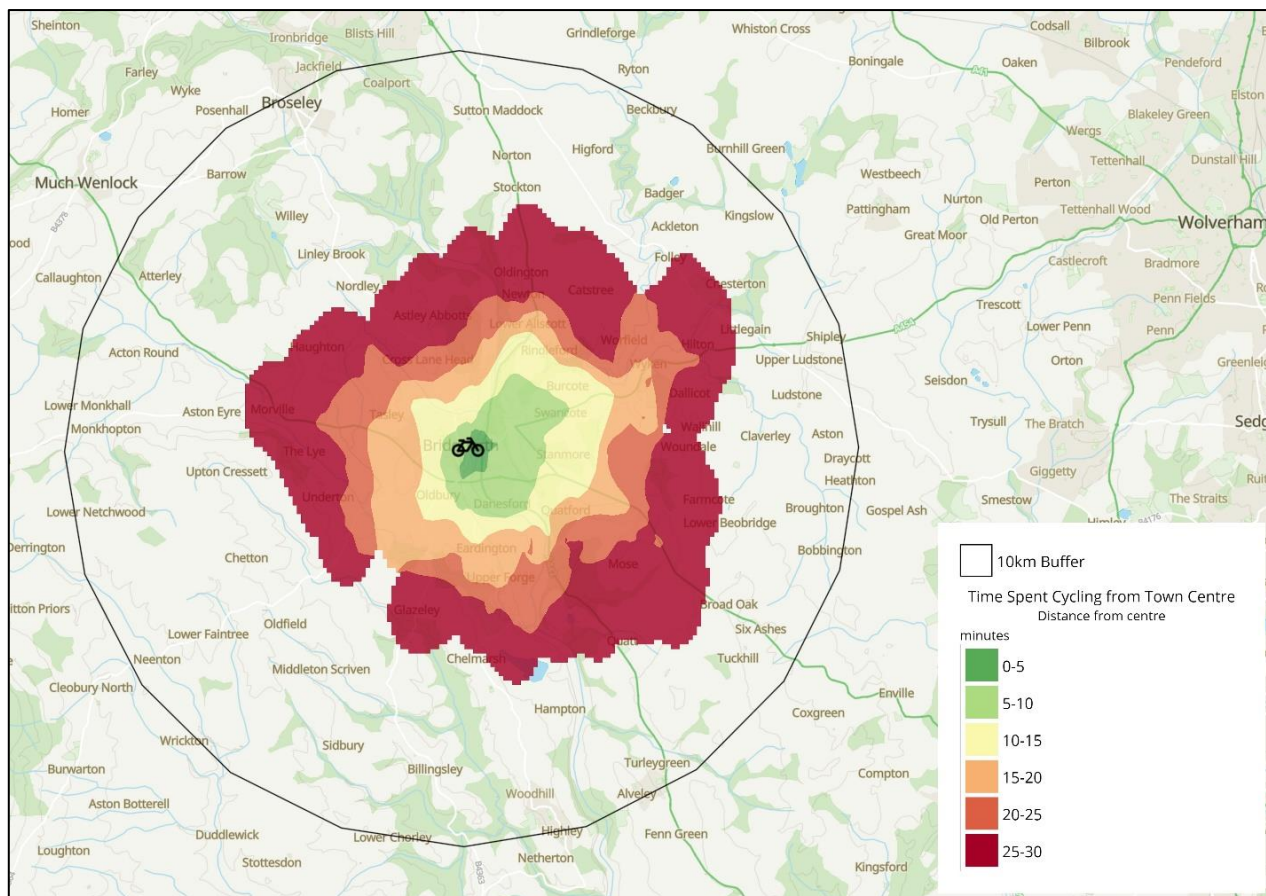


Figure 3-3: Cycling Catchment Map from Bridgnorth Town Centre

### 3.1.4 Desire Lines for Cycle Movement

Once the origin and destination areas were identified, desire lines, which are straight ‘as the crow flies’ lines, were drawn. These desire lines, informed by an evidence base (see the main LCWIP Report, Section 5.1.2), show existing and potential cycling demand between origins and destinations and are a core component of the cycle route identification process. The desire lines for Bridgnorth are shown in Figure 3-4.

These desire lines are ‘straight lines’ which means that they do not account for the presence of specific cycle routes (whether existing or proposed) at this stage. The purpose of the subsequent route selection process is to convert these desire lines into potential routes. Each desire line’s relative importance was classified using the following criteria, considering both the existing numbers of cyclists and future projections of cyclists.

- **Primary Desire Line:** Potential for a high number of people (as a general rule greater than 250 people per day, but this is relative to the population of the area) to cycle typically linking large or high-density existing or planned residential areas with key destinations

- **Secondary Desire Line:** Potential for a moderate number of people (as a general rule between approximately 50 and 250 per day, but this is relative to the population of the area) cycling from existing or planned residential areas, typically connecting to destinations including education, hospitals and existing or planned employment sites
- **Local Desire Line:** Low number of people (as a general rule less than approximately 50 people per day but this is relative to the population of the area) cycling between local destinations and to access primary and secondary desire lines

Figure 3-4 indicates that there are several key desire lines in the study area:

- The Primary Desire Lines connect to the town centre and the large industrial estate to the east
- There are Secondary Desire Lines heading into the town from smaller residential areas
- There are Local Desire Lines connecting the town’s residential areas to local services

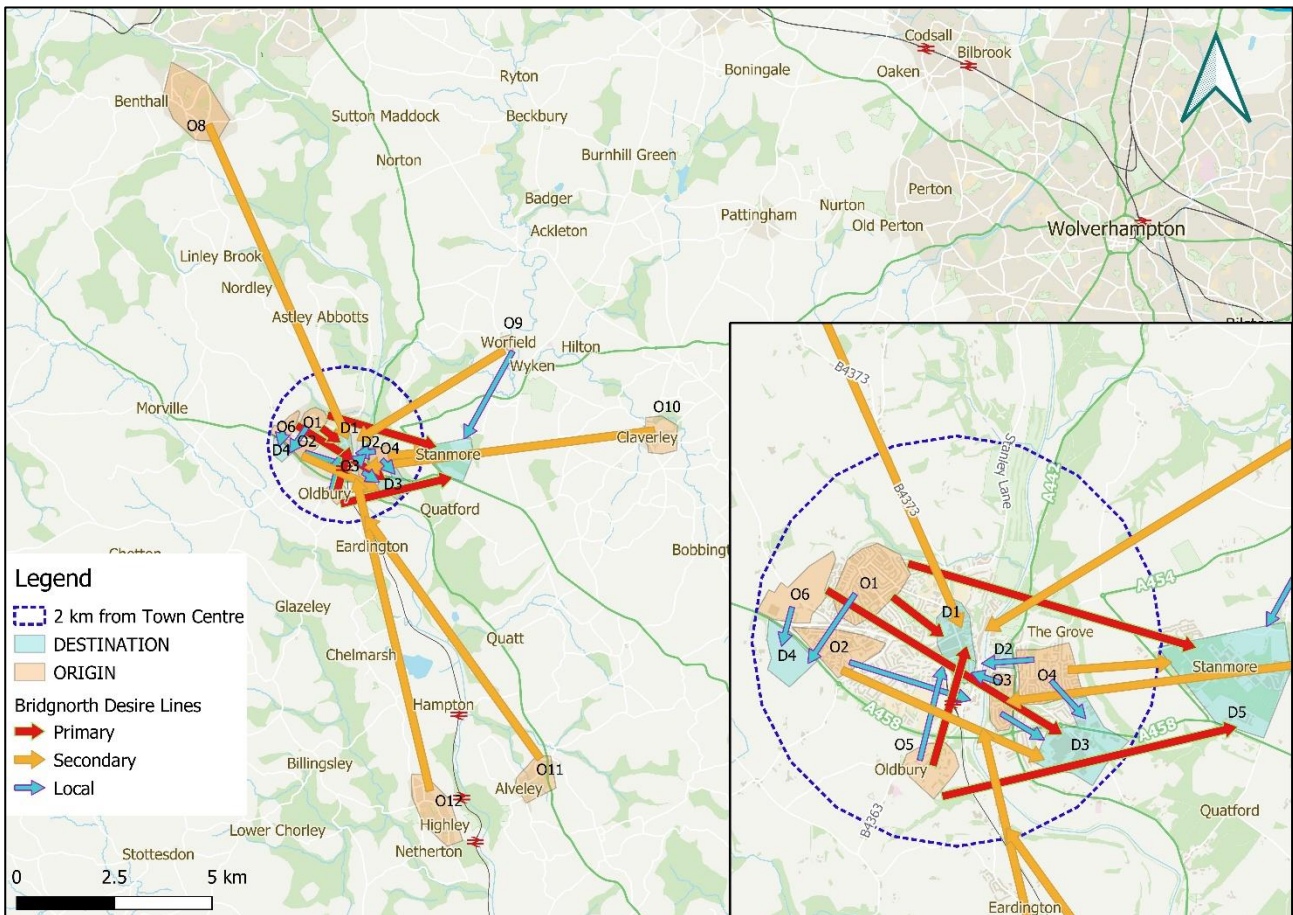


Figure 3-4: Cycle Desire Lines

## 3.2 Stakeholder Engagement

Alongside the desire line analysis, the route selection process has also been informed by suggestions from people who currently cycle in the study area to reflect the opportunities and current challenges of cycling around Bridgnorth. These suggestions were collected through a local workshop and a site visit (see Chapter 2). All suggestions were collated on a virtual platform called Miroboard, a snapshot of which is shown in Figure 3-5. Route suggestions by stakeholders were considered in the proposed network, those suggestions that were supported by other evidence were included in the final network.

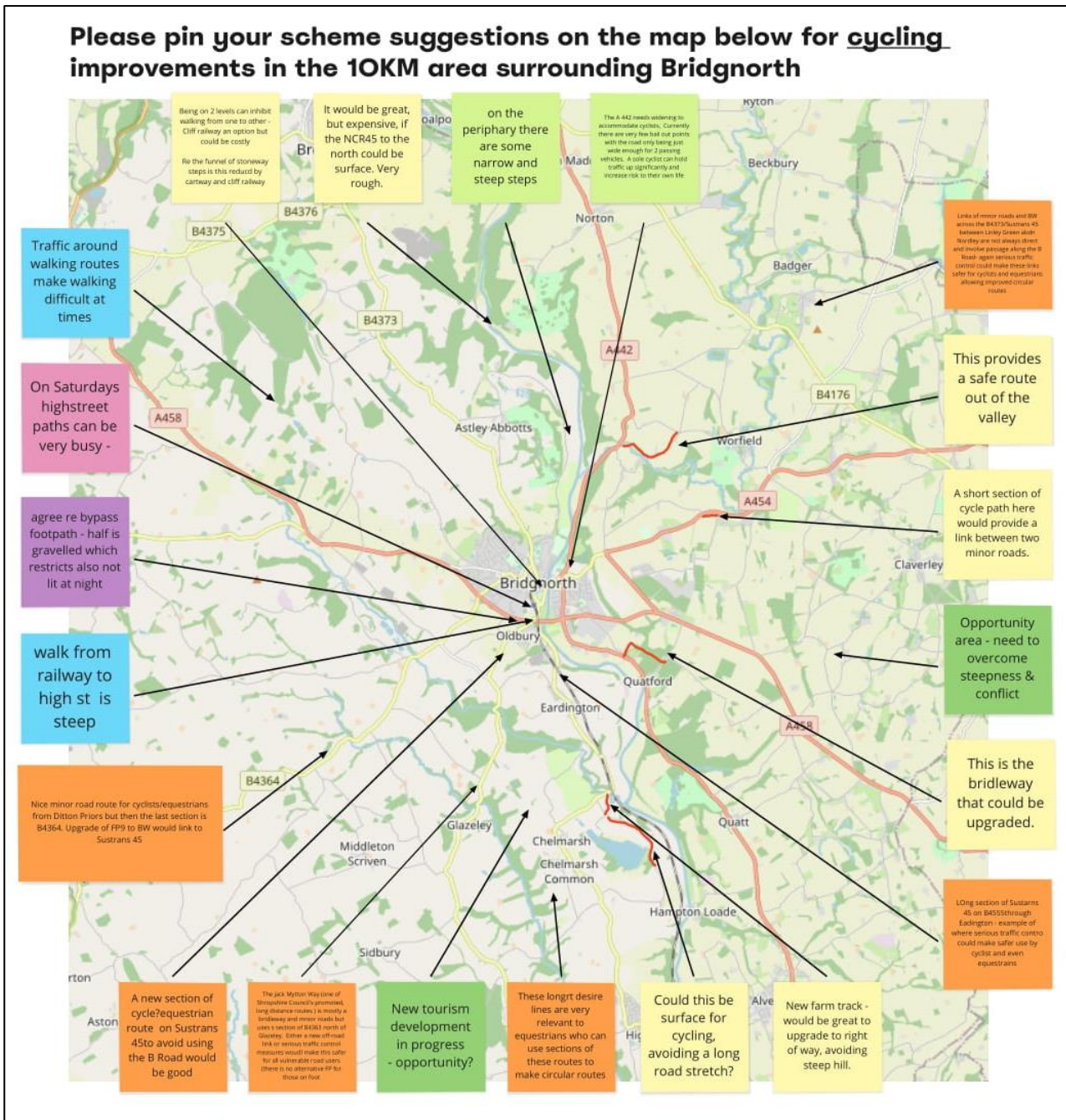


Figure 3-5: Stakeholder scheme suggestions in wider Bridgnorth, snapshot taken from Miroboard

### 3.3 Cycle Route Selection – Route Alignment of Cycle Routes

The straight desire lines were then converted into routes that aligned with street networks, using Google Maps and Open Street Maps and informed by current and potential future cycling demand. This included use of Strava Metro and Propensity to Cycle tool data as well as feedback from the stakeholder workshop and on-site observations of existing infrastructure and road layouts.

#### 3.3.1 Design Principles

The selection of routes was further refined by applying the following LTN 1/20 Core Design Principles (DfT, 2020) which, as identified in the main LCWIP Report, are essential requirements for Shropshire Council to meet in order to qualify for future active travel grant funding from Active Travel England.

Design Principle	Route Selection Process Compliance
<b>Coherent</b>	Routes have been selected that follow logical routes and are of a consistent nature, where possible and practical, which easily connect to key identified destinations.
<b>Direct</b>	Routes have been selected that provide the most direct connection, where practical, between key origins and destinations. This includes the identification of upgrades to current routes which do not currently satisfy the main desire lines.
<b>Safe</b>	The precise type of route provision is subject to further refinement through the concept and detailed design stages of the process. A key focus through the process in this LCWIP has been to establish the need to upgrade routes that currently constitute an advisory cycle lane next to a general traffic lane as well as delivering new routes that are segregated from general traffic, where achievable in available carriageway space.
<b>Comfortable</b>	The precise type of route surfacing is subject to further refinement through the concept and detailed design stages of the process. Focus through this LCWIP process has been to propose improvements where surface quality has been identified as a problem and to upgrade current sections of the network which involve frequent transitions between on and off carriageway facilities.
<b>Attractive</b>	The precise nature of route attractiveness is subject to further refinement through the concept and detailed design stages of the process. This LCWIP establishes the principle of routes which complement natural assets (e.g. the waterfront) alongside network wide improvements, such as wayfinding, that could make cycling a more enjoyable and hassle-free experience.

Table 3-1: Summary of Route Selection Process with LTN 1/20 Core Design Principles

#### 3.3.2 Guiding Principles

To support the desired design principles, the cycling improvements proposed (see Section 3.4), will adhere to the general guiding principles contained in Appendix – Guiding Design Principles.

### 3.4 Proposed Routes

Figure 3-6 illustrates the proposed routes across the study area alongside the existing network. Proposed routes have been categorised depending on the classification of the desire line they support (see Section 3.1.4). Details of the proposed schemes are outlined in the below Sections 3.4.1 to 3.4.3.

#### **Route Alignment Uncertainty**

It should be noted that due to the strategic nature of LCWIPs, it is not possible to capture all detailed engineering constraints, such as precise carriageway width and the impact of removing on-street car parking, which may affect the future delivery of new routes. In these cases, routes have been identified based on key principles including their ability to directly fulfil desire lines whilst also accounting for high-level constraints which may impinge deliverability such as width of existing funnel points (e.g. bridges). This means the precise route alignment detail (e.g. specific streets) is subject to change through any future preliminary and detailed route design process.



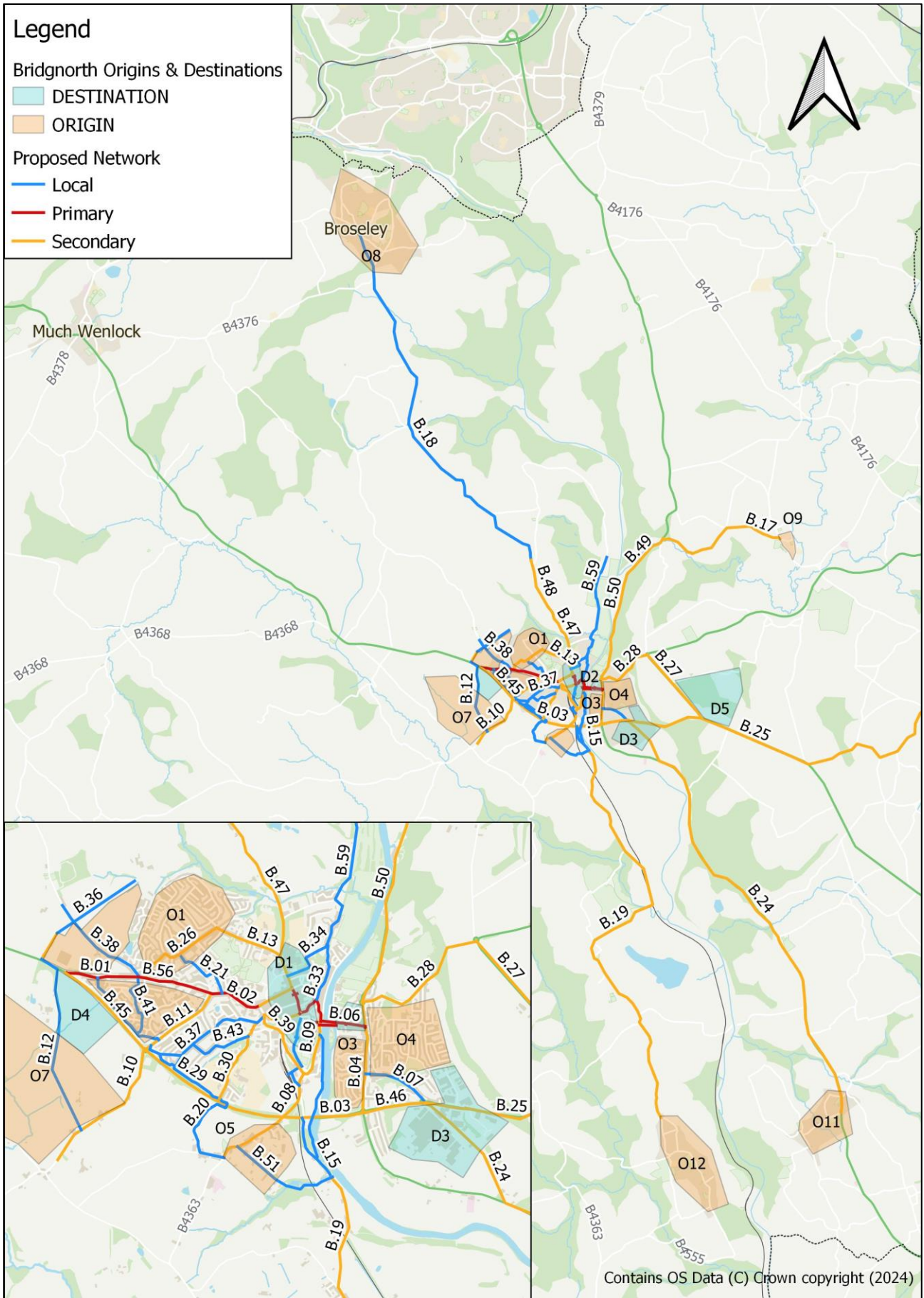


Figure 3-6: Proposed routes in the Bridgnorth Study Area

Note: categories of routes are based on the desire line they follow, not the priority of their delivery

### 3.4.1 Primary

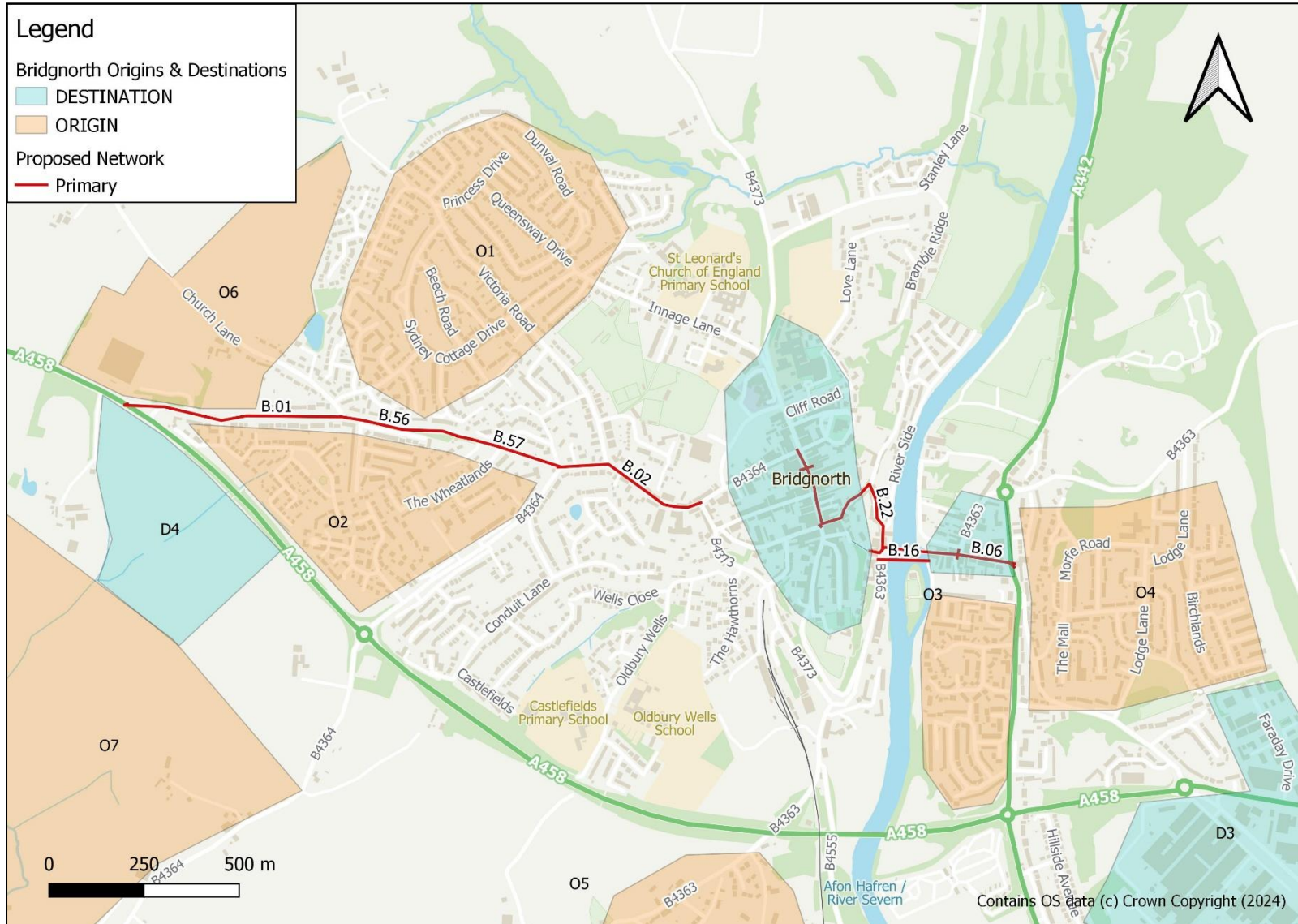


Figure 3-7: Bridgnorth Proposed Network Plan; Schemes Following a Primary Desire Line

Scheme	Description	Recommendation
B.01	Wenlock Road (west) between A458 and Church Lane	Investigate widening of existing footway (southern side) to create a segregated cycling facility including provision of side road crossing treatments. Provision of crossing facilities at the two roundabouts along the route in line with definitive design standards
B.02	Whitburn St - Link into the town centre from the west of Bridgnorth	Investigate provision of a light segregated cycling facility (with localised treatments at pinch-points) or reduction of traffic speeds to allow for a shared space with vehicular traffic
B.06	Bridgnorth Bridge - River crossing between High Town and Low Town	Investigate options for the Bridgnorth Bridge, including widening of the existing footway, one-way access with contraflow cycle lane or another localised treatment. Alternative scheme - see B.16.
B.16	New pedestrian/cycle bridge across the river	Investigate provision of a new pedestrian/cycle bridge across the river linking into Severn Southside as an alternative scheme to B.05.
B.22	Northern end of Cartway to through traffic	Investigate reduction of traffic volumes and/or speed to allow for a shared space with vehicular traffic.
B.23	High street	Investigate rationalisation of parking and/or reduction of traffic volumes and/or speed to allow for a shared space with vehicular traffic.
B.56	Wenlock Road (central) between Church Lane and Westland Drive	Investigate provision of a segregated cycling facility including side road crossing treatments and provision of upgraded/additional crossing facilities in line with definitive design standards.
B.57	Wenlock Road (east) between Ludlow Road and Westland Drive	Investigate provision of a segregated cycling facility including side road crossing treatments and provision of upgraded/additional crossing facilities in line with definitive design standards.
B.CROSS1	St Johns Street in Low Town	Upgrade existing informal crossing from Mill St to St Johns Street in Low Town in line with definitive design standards.
B.CROSS3	Consider new crossing scheme at Postern Gate/Listley Street junction	Provision of an additional crossing facility at the Postern Gate/Listley St junction in line with definitive design standards

Table 3-2: Details of Proposed Schemes in Bridgnorth Following a Primary Desire Line

### 3.4.2 Secondary

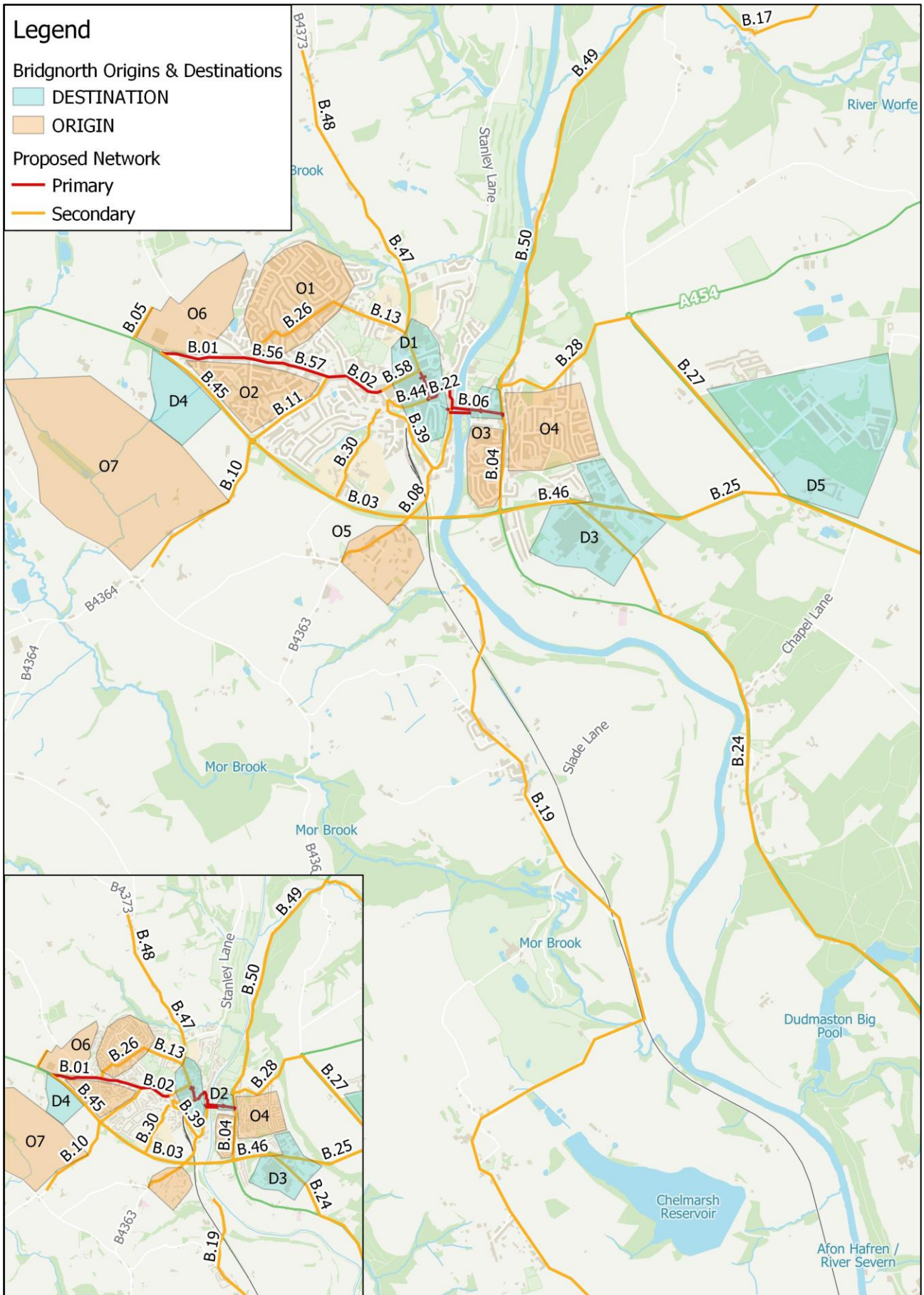


Figure 3-8: Bridgnorth Proposed Network Plan; Schemes Following a Secondary Desire Line

Scheme	Description	Recommendation
B.03	Central section of the bypass (A458)	Investigate provision of a shared-use facility alongside the A458 from the A458/Ludlow Road roundabout to the A458/Kidderminster Rd (A442) roundabout. Include crossing provision at the two roundabouts in line with definitive design standards (in partnership with National Highways)
B.04	Connect bypass (A458) to residential areas and provide connection to the Low Town	Investigate provision of a segregated cycling facility on Kidderminster Road/Hospital St/Cann Hill Rd (A442). Include side road crossing treatments and upgraded crossing provision at the Cann Hill Rd/Wolverhampton Rd/Mill St roundabout in line with definitive design standards (in partnership with National Highways)
B.05	Crossing of bypass (A458) from new residential area (Tasley Garden Village) to future employment area (Land at Tasley south of the A458 bypass)	Investigate provision of a new crossing or underpass of the bypass (A458) (in partnership with National Highways) to link in with Leasowes
B.08	Connecting Oldbury to the town centre via Oldbury Rd, including crossing of the bypass	Investigate widening of existing footway to create a shared-use facility on Oldbury Road (B4363) (with localised treatments at pinch-points such as under the railway bridge). Include side road crossing treatments and upgraded crossing provision at the junction between Underhill Street/Hollybush Road/Oldbury Road at the northern end of the route in line with definitive design standards.
B.09	Alternative route to the river route (B.15), provides bypass of the town centre and links to railway station, along Underhill Street	Investigate provision of a segregated cycling facility (with localised treatments at pinch-points). Include side road crossing treatments and upgraded or additional crossing provision.
B.10	Link from the bypass (A458) to the Tasley Garden Village development to the south west of Bridgnorth.	Investigate provision of a segregated cycling facility or a shared-use facility on Ludlow Rd (B4364). Include side road crossings and crossing provision at the A458/B4364 roundabout in line with definitive design standards (in partnership with National Highways)
B.11	Provide connection from residential area west of the town centre to the town centre along Ludlow Road	Investigate provision of a segregated cycling facility on Ludlow Road (B4364). Include side road crossing treatments and crossing provision at the A458/B4364 roundabout in line with definitive design standards (in partnership with National Highways)
B.13	Route along Innage Lane and North Gate	Investigate provision of a segregated cycling facility (including a light segregated cycling facility) on Innage Lane (with localised treatments at pinch-points) or reduction of traffic speeds to allow for a shared space with vehicular traffic
B.17	Rural route between A442/Rindleford Junction and Worfield.	Encourage shared use of this route, as a rural road, considering, where appropriate and practical, provision of measures, potentially to include passing places and installation of signage, as well as through active engagement with local communities.

Scheme	Description	Recommendation
B.19	Connection from Highley to Bridgnorth along the B4555 through Eardington, Chelmarsh and Chelmarsh Common	Investigate provision of a shared-use path parallel to the B4555. Investigate reduction of traffic speeds/volumes to allow for a shared space with vehicular traffic through villages where there is insufficient width for a shared-use path
B.24	Connection from Alveley to Bridgnorth along the A442 through Danesford, Quatford and Quatt	Investigate provision of a continuous shared-use facility parallel to the road.
B.25	Connection from Claverley (O10) to Bridgnorth along Pound Street and the A458	Investigate shared path parallel to road, consider denoting it as a bridleway depending on permissions
B.26	Local route through residential area (O1) connecting to desire line movements to town centre (D1) - route along Hookfield, Sydney Cottage Drive, Racecourse Drive and Leasowes Close	Reduce speed limit to 20mph
B.27	Connection into the Stanmore Industrial Estate and Country Park (D5) along the A454	Upgrade existing narrow path/footway along A454 to a shared path and introduce crossing provision at the A454/B4363 and A454/A548 roundabouts
B.28	Route along Wolverhampton Road to connect Low Town (D2) to Stanmore Industrial Estate (D5)	Investigate cycle lanes or alternative cycle route on parallel routes
B.30	Route along Oldbury Wells – linking into the schools	Create shared path on eastern side, creating a 20mph zone where there is insufficient width for shared path
B.39	Route along Hollybush Road (D1) providing bypass of the town centre	Widen footway into shared path or add cycle lanes (potentially removing northern footway for space)
B.44	Route along Listley Street providing link into the High Street	Create a point closure along Listley Street, closing off the eastern end
B.45	Route along the A458 between Wenlock Road and Ludlow Road	Create a new shared path along the bypass
B.46	Route along the A458 from Low Town to the business park	Widen existing path to make a segregated shared path
B.47	Route along the B4373 north of Bridgnorth heading to Broseley (O8)	Make a Quiet Lane, provide signage and trim foliage
B.48	Route along B4373 passing through Cross Lane Head	Make a Quiet Lane, provide signage and trim foliage
B.49	Route along A442 Bridgnorth Road from the Rindleford Junction to where the path begins (joining to scheme B.50)	Create a cycle lane with light segregation, reduce speed limit to at least 40mph
B.50	Route along A442 Bridgnorth Road between the roundabout and where the path ends (joining to scheme B.49)	Investigate transforming existing (and currently inconsistent) path into shared path parallel to road, including trimming back foliage
B.58	Route along Whitburn Street linking to the High Street	Reduce speed limit to 20mph

Table 3-3: Details of Proposed Schemes in Bridgnorth Following a Secondary Desire Line

3.4.3 Local

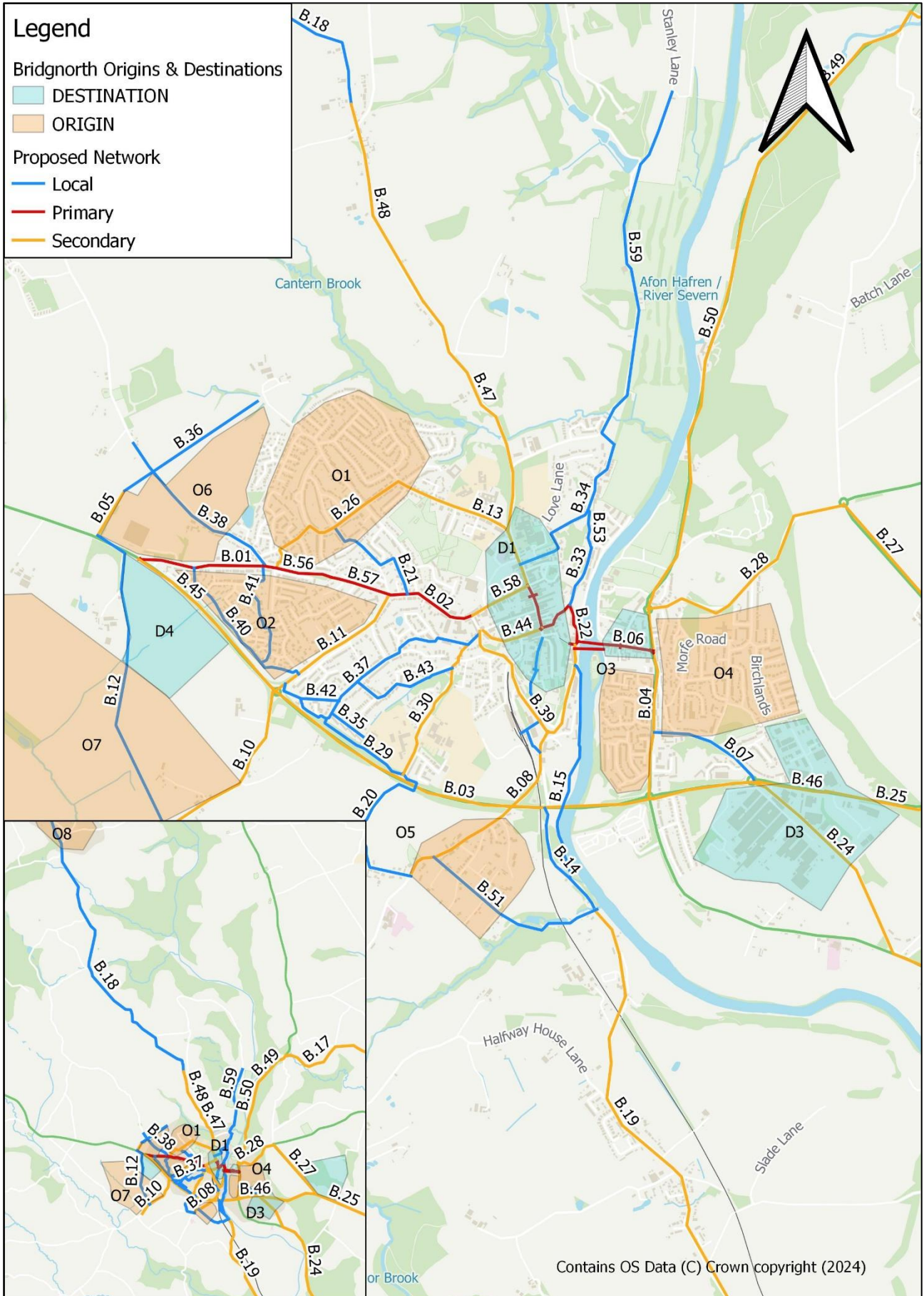


Figure 3-9: Bridgnorth Proposed Network Plan; Schemes Following a Local Desire Line

Scheme	Description	Recommendation
B.07	Route from the A442 to the Industrial Park along Stourbridge Rd.	Investigate provision of a segregated cycling facility (with localised treatments at pinch-points). Include side road crossing treatments and upgraded crossing provision at the A458/ Stourbridge Rd/ Old Worcester Rd roundabout in line with definitive design standards (in partnership with National Highways)
B.12	Connection between the Tasley Garden Village development to future employment zone.	Provision of a segregated cycling facility through the future employment area (Land at Tasley south of the A458 bypass) Include side road crossing treatments and crossing provision at the proposed new roundabout in line with definitive design standards.
B.14	Connecting the river route to the bypass (A458) via the Cankhorn	Investigate provision of step-free access from the A458 (in partnership with National Highways). Investigate widening of the existing footway to create a shared-use facility or encourage shared use of the Cankhorn, considering, where appropriate and practical, provision of measures, potentially to include passing places and installation of signage, as well as through active engagement with local communities
B.15	Connecting Oldbury to the river route which links north to the town centre, alternative route to scheme B.08	Upgrade existing pathway (e.g. widening, improved surfacing, lighting and signage)
B.18	Connection between Bridgnorth and Broseley along the B4373.	Investigate provision of a shared-use path parallel to the B4373 or encourage shared use of this route, considering, where appropriate and practical, provision of measures, potentially to include passing places and installation of signage, as well as through active engagement with local communities.
B.20	Connection from Oldbury along Manor Farm Lane to Oldbury Wells school	Encourage shared use of Manor Farm Lane, as a rural road, considering, where appropriate and practical, provision of measures, potentially to include passing places and installation of signage, as well as through active engagement with local communities. Upgrade and formalise existing off-road paths linking Manor Farm Lane to the edge of the A458 and Oldbury Wells to the edge of the A458 through improving surfacing, lighting and signage. Investigate provision of a new pedestrian/cycle underpass linking Manor Farm Lane to Oldbury Wells School.
B.21	Connection between Sydney Cottage Drive and Westgate	Upgrade existing pathway (e.g. widening, improved surfacing, lighting and signage)
B.29	PROW parallel to A458 from Ludlow Road to Oldbury Wells	Upgrade existing PROW, including path widening, surfacing, signage and lighting improvements.
B.31	Bridge crossing New Rd to the Bridgnorth Railway Station	Upgrade existing bridge (including increased signage and lighting improvements)
B.32	Postern Gate	Investigate reduction of traffic volumes and/or speed to allow for a shared space with vehicular traffic, connecting into W. Castle St (B.52)
B.33	Friar's Street	Upgrade existing pathway, including signage and lighting improvements.



Scheme	Description	Recommendation
B.34	Route along Cliff Rd, Love Lane and Bramble Ridge to connect Northgate with Stanley Lane	Investigate reduction of traffic volumes and/or speeds to allow for a shared space with vehicular traffic on Cliff Rd, Love Lane and Bramble Ridge. Upgrade existing pathway alongside Ropewalk Dingle Countryside Site (e.g. by widening, improving surface, additional lighting).
B.35	Castlefields	Introduce School Street
B.36	North-south link through the Tasley Garden village site	Create segregated north-south cycling facility (along spine road) through new housing development. Include side road crossing treatments and provision of crossings in line with definitive design standards
B.37	Rose Lane and Conduit Lane	Investigate reduction of traffic speeds to allow for a shared space with vehicular traffic on Conduit Lane and Rose Lane. Upgrade existing path connecting Rose Lane with Hollybush Rd (e.g. by widening, improving surface, lighting). Provide connection from Conduit Lane/Uplands drive into B.29.
B.38	Route along Church Lane to Taskey, linking residential area (O6) to main road into town	As suggested in Bridgnorth's Master Plan, allow greater priority to pedestrians and cyclists by encouraging/re-routing traffic for the new development via the new spine road. Alongside this, improve the footway along its entire length, giving as much space to pedestrians and cyclists as possible.
B.40	Route along existing PROW through western residential area (O2), parallel to the A458	Connect route through to the bypass
B.41	Route through western residential area (O2) north-south along PROWs, Tavistock Close, Roundthorn Close and Maudlins Close	Improve signage to route
B.42	Connection along the PROW linking Ludlow Road to Conduit Lane	Upgrade woodlands route for cycling including replacing steps with ramp, increasing lighting and signage and widening through vegetation removal where possible
B.43	Route along Highlands Road and the PROW connecting into Oldbury Wells	Upgrade stepped woodlands route for cycling, including lighting, signage, vegetation removal and surface upgrade
B.51	Route along Old Mill Lane between Oldbury Road and the B4555 through Oldbury (O5)	Provide signage on Old Mill Lane ensuring foliage is trimmed and traffic speeds are kept low. Between Old Mill Lane and B4555, create surfaced shared use path
B.52	Route along Postern Gate linking into the southern end of the High Street	Investigate closing it to through traffic
B.53	Route along existing PROW between Friar's Street and Bramble Ridge	Provide 3.5m wide path with bollards, acting as cycle route and emergency flood access route, ensuring no user loses their right of access (e.g. equestrians)
B.54	Link from Oldbury Road to Bridgnorth Station along existing pathway	Upgrade existing path to provide step-free access to station and ped/cycle bridge
B.59	Route along Sandy Lane between Bridgnorth and NCN Route	Upgrade road to improve safety for cyclists as part of the NCN
B.CROSS2	Crossing of New Road towards Castle Gardens	

Table 3-4: Details of Proposed Schemes in Bridgnorth Following a Local Desire Line

## 4 Network Planning for Walking

This chapter summarises the identification of the walking network for Bridgnorth as part of the Shropshire LCWIP. Development of the walking network is focused on identification of Core Walking Zones (CWZs), as identified in the main LCWIP report (see Chapter 6). The identification of CWZs allows walking improvements to be prioritised in areas of higher pedestrian footfall where there is a particularly high concentration of key destinations. Bridgnorth Town Centre has been identified, based on analysis of key locations of destinations such as retail facilities, employment areas and transport interchanges, as Bridgnorth’s key CWZ. This was also agreed via discussions with key stakeholders at the Bridgnorth workshop. Figure 4-1 below shows the CWZ for Bridgnorth alongside key origin and destination points within the town, which include retail spaces, the railway station, the hospital and some local schools.

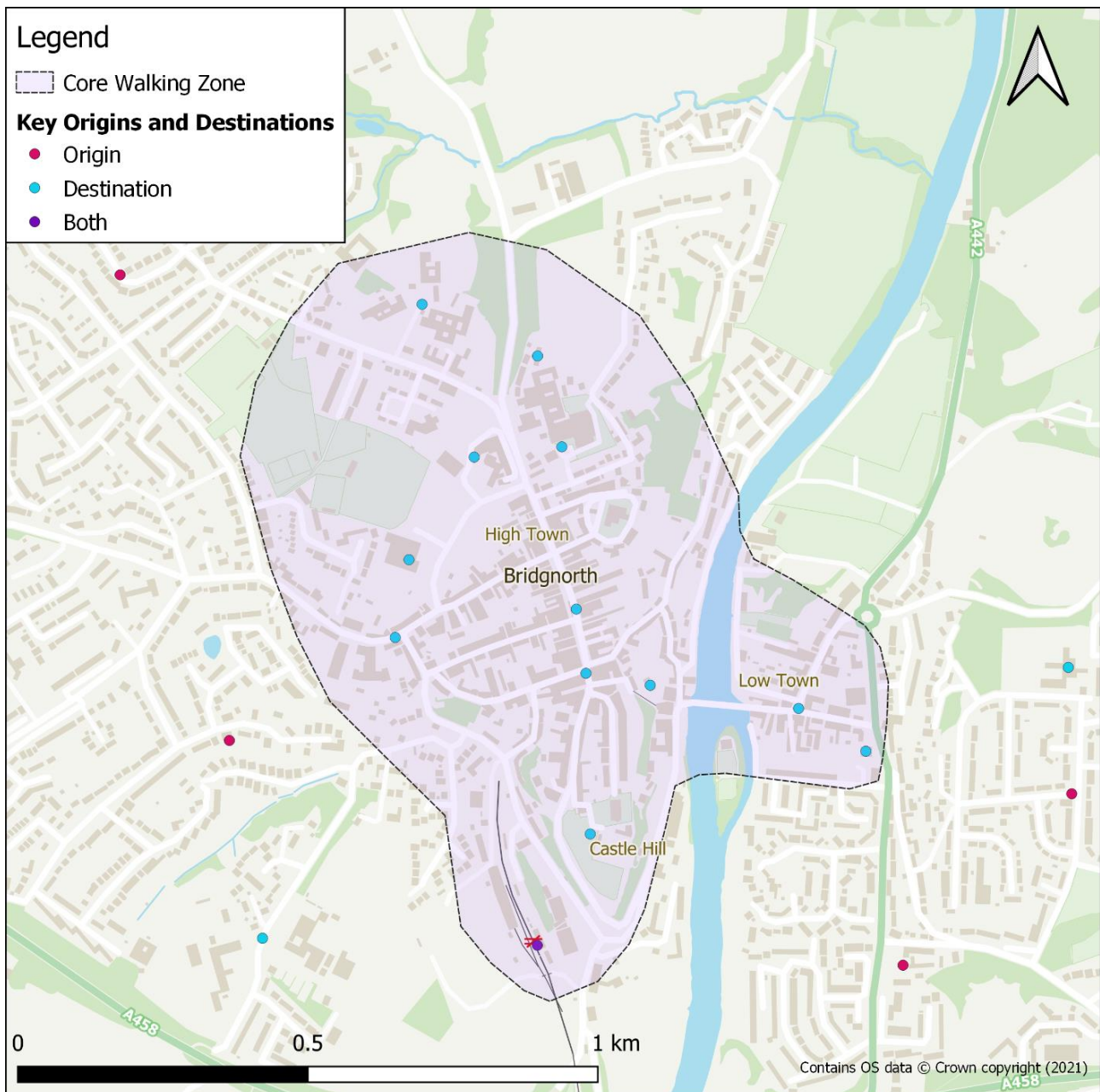


Figure 4-1: Bridgnorth CWZ

In order to identify routes both to and within the CWZs, a network of preferred walking routes has been defined for Bridgnorth drawing on an analysis of the following data:

- Key Walking Trip Generators - Accessibility Analysis (see Section 4.1.1)
- Key Walking Routes (see Section 4.1.2)
- Stakeholder Engagement (see Section 4.1.3)
- Walking Route Audits (see Section 4.1.4)

The resulting CWZ improvements are detailed in Section 4.2.

## 4.1 Core Walking Zone Analysis

### 4.1.1 Key Walking Trip Generators Accessibility Analysis

Figure 4-2 shows the results of a walking accessibility assessment, categorised by walking journey time, undertaken for Bridgnorth’s town centre. It illustrates that the following key trip generators can be accessed on foot within a 30-minute walk or less from the centre, shown as the walking icon and located on the High Street.

- Bridgnorth’s High Town is within a 5-minute walk
- The Low Town across the river is accessible within a 10-minute walk
- The village Oldbury are located within a 30-minute walk

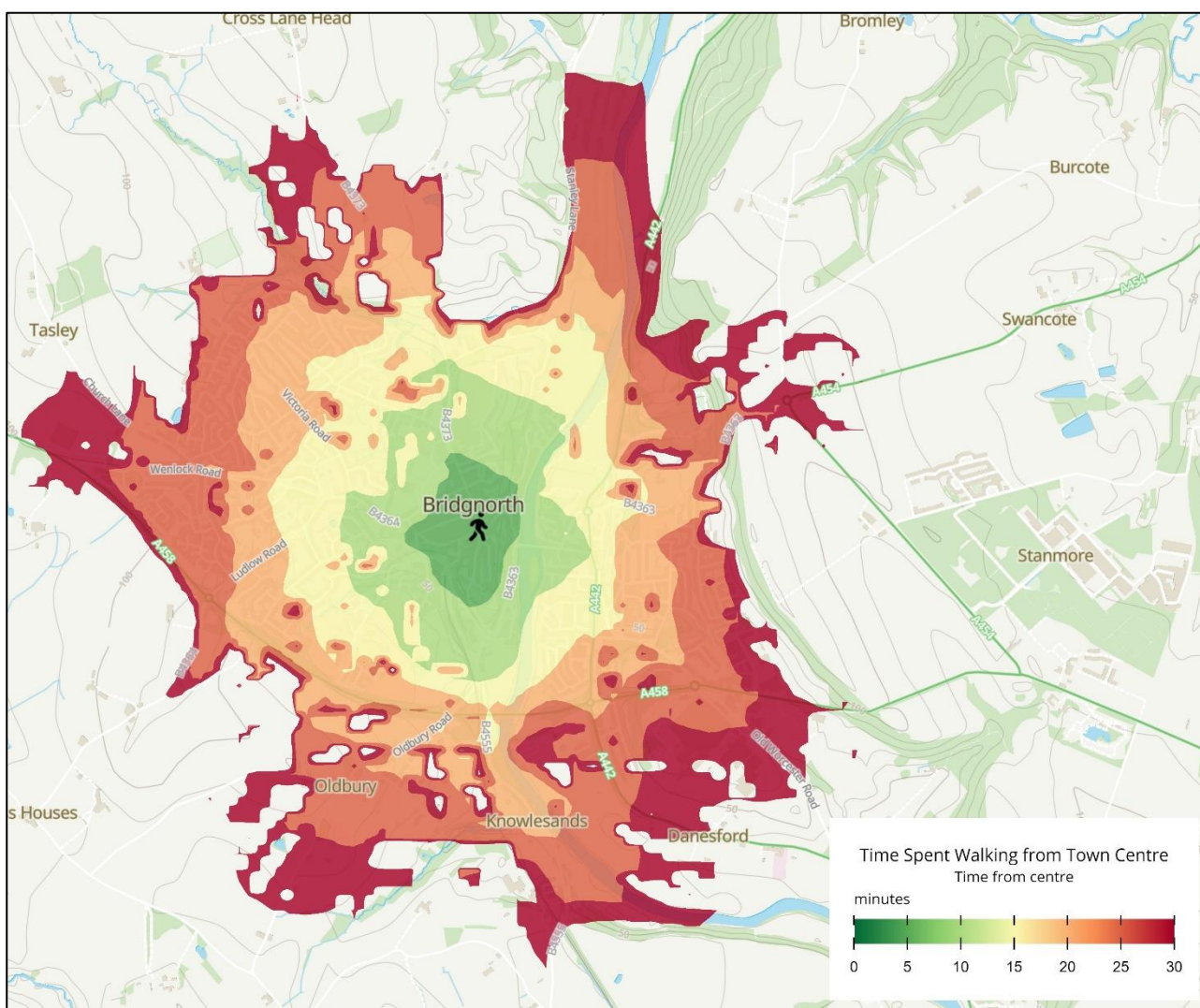


Figure 4-2: Bridgnorth Town Centre CWZ Accessibility Analysis

### 4.1.2 Key Walking Routes

Figure 4-3 illustrates the key walking routes within a ten-minute walk of the High Street, the centre point within the Bridgnorth CWZ. The key walking routes area categorised using the following criteria which is contained within the DfT Guidance (DfT, 2017):

- **Primary Walking Routes:** Such as busy shopping streets, business areas and main pedestrian thoroughfares
- **Secondary Walking Routes:** Moderate use routes connecting to primary routes and local centres
- **Link Footways:** Connecting local access footways through urban areas
- **Local Access Footways:** Low use footways such as estate roads and cul-de-sacs

Figure 4-3 indicates:

- Primary route through the town centre links up the high street towards key secondary routes reaching out beyond to the hospital and other destinations
- Key secondary routes provide connectivity across the town centre
- Numerous link and local access footways provide cut-throughs within the town centre and provide access to multiple services, including the train station



**Please pin your scheme suggestions on the map below for cycling improvements in Bridgnorth**

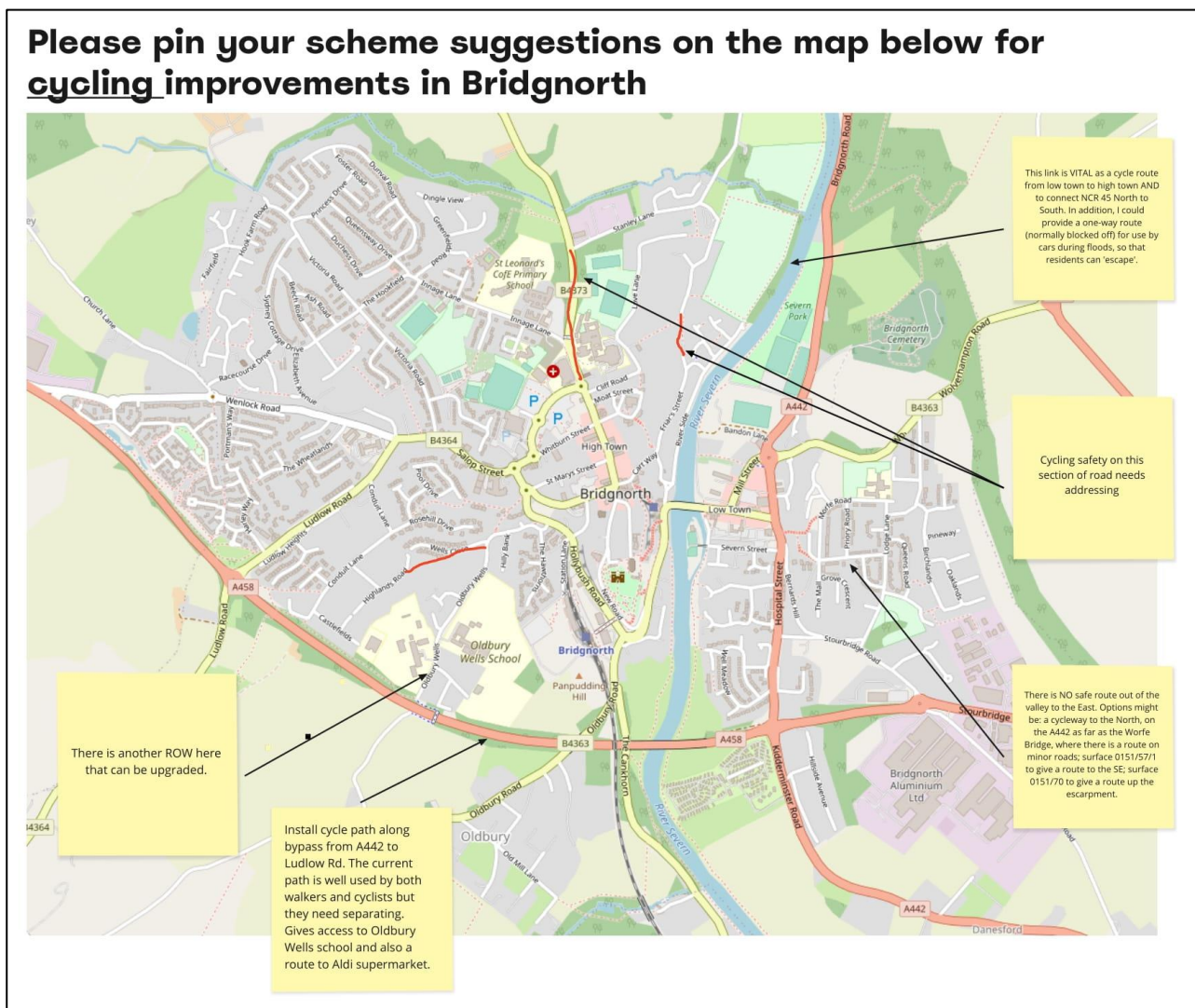


Figure 4-4: Stakeholder Feedback on Bridgnorth Town Centre

A subsequent site visit, as well as follow-up survey sent to those stakeholders that attended the workshop, enabled validation and further refinement of the CWZs, key walking routes and proposed improvements (see Chapter 2 for further detail).

**4.1.4 Walking Route Audits**

The ease of walking both to the CWZ from the town’s residential areas as well as through the CWZ (known as permeability) can be affected by the presence of barriers such as railway lines, rivers and heavily trafficked routes, this is known as ‘severance’. Crossing points at these barriers create ‘funnel routes’ which have higher pedestrian flows.

A desktop audit, validated by a site visit (undertaken in March 2022) of the existing key pedestrian routes both to the Bridgnorth CWZ from the surrounding residential areas and through the Bridgnorth CWZ was undertaken to determine where improvements were needed. The audit included a review of footway provision and condition, the availability of crossing points and way-finding signage. A key focus of the audit was reviewing the infrastructure for those with mobility impairments. It also included consideration of historical collision data involving pedestrians.

The Walking Route Assessment Tool provides a baseline for existing conditions and identified the existing barriers and funnel routes (see Figure 4-5) when walking both to and within the CWZ. The results of the audit are shown in Table 4-1, Bridgnorth’s CWZ achieved a score of 50%, far below the minimal provision score of 70% set out by the guidance.

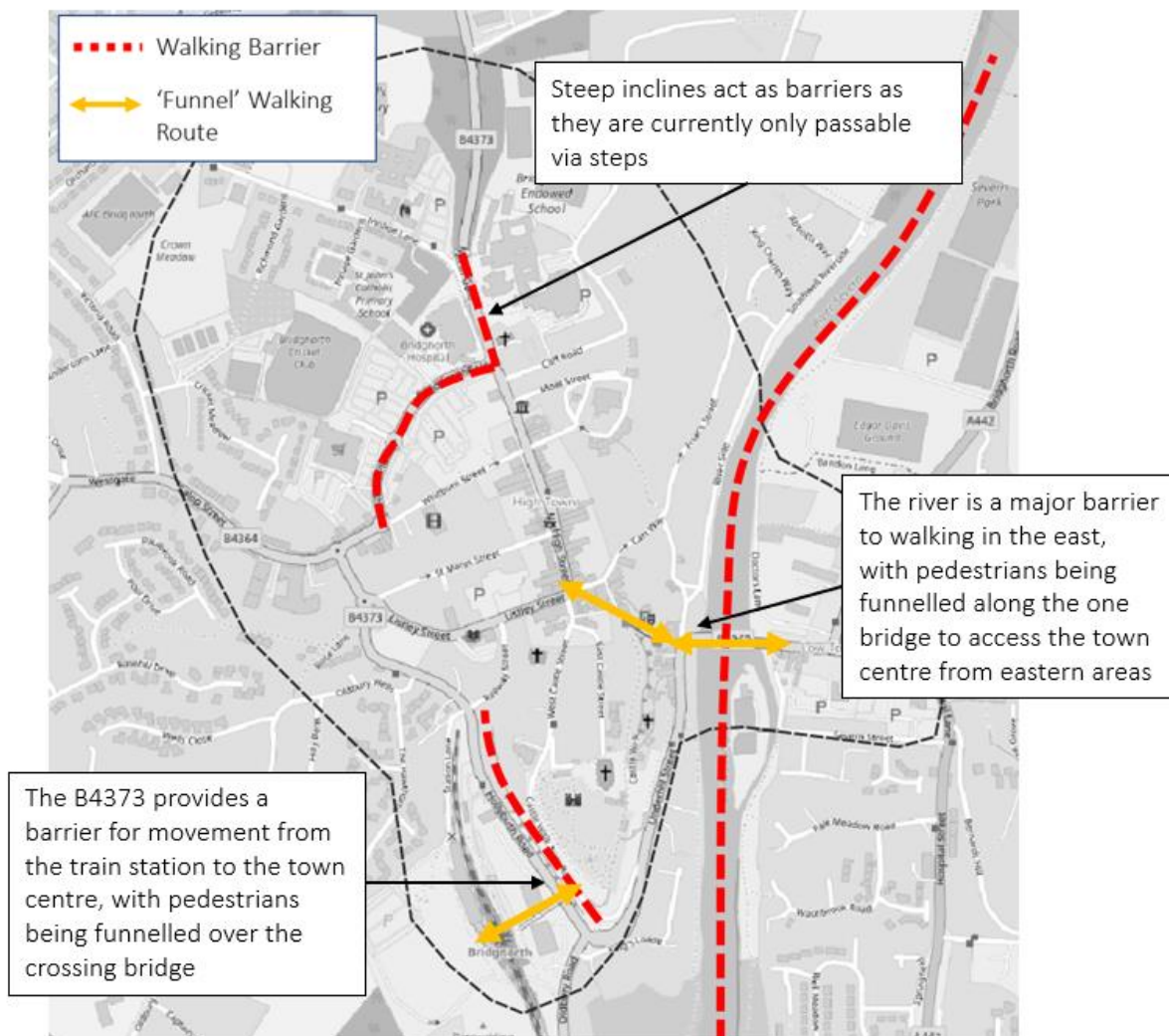


Figure 4-5: Bridgnorth town centre CWZ Barrier & Funnel Analysis

Principle	Performance Score	% Score
<b>Attractiveness</b> (includes maintenance, fear of crime, traffic noise and pollution)	4	67%
<b>Comfort</b> (includes condition of footways, footway width, width on staggered crossings/pedestrian islands/refuges, prevalence of vehicles parked on the footway and gradient of footways)	3	30%
<b>Directness</b> (includes footway provision, location of crossings in relation to desire lines, gaps in traffic, impact of controlled crossings on journey time and green man time)	7	70%
<b>Safety</b> (includes traffic volume, traffic speed and visibility)	3	50%
<b>Coherence</b> (includes provision of dropped kerbs and tactile paving)	0	0%
<b>Total</b>	<b>17</b>	<b>50%</b>

Table 4-1: Walking Route Audit Scores for the Bridgnorth CWZ

## 4.2 Core Walking Zone Improvements

Strategic recommendations for each CWZ have been based upon the key outcomes of Section 4.1 above.

Table 4-2 provides a series of overarching recommendations for improving the walking environment in the Bridgnorth town centre CWZ, categorised by the key Gear Change (2020) principles of Attractiveness, Comfort, Directness, Safety & Coherence. As identified in the main LCWIP report, these principles are essential requirements for Shropshire Council to meet in order to qualify for future active travel grant funding from Active Travel England.

The proposed interventions are high-level and identify concepts for further consideration in the next stage of design. The interventions identified seek to address the issues and barriers identified in this chapter. Walking improvement measures for each of the CWZ's range from minor interventions such as dropped kerbs to new crossings, footway widening and public realm improvement projects. Although the proposed interventions focus on the CWZs in line with DfT LCWIP guidance, they provide examples of the types of interventions that can be implemented in other parts of Bridgnorth and county-wide.

It is also worth noting that the majority of the cycle schemes proposed in Section 3.4 include provision for pedestrians and so also act as walking recommendations. The recommendations proposed below cover wider area improvements as most of the route specific changes are covered by cycling proposals above.

Key Principle	Scheme Number	Strategic Walking Improvement Recommendations
Attractiveness & Comfort	BW.01	Repurpose carriageway space along the High Street for public realm improvements such as seating and market stalls
Directness	BW.02	Improve pedestrian links to parking behind the High Street
Safety	BW.03	Make the High Street more pedestrian orientated by widening footways and considering full pedestrianisation
	BW.04	Improve crossing points along the High Street with increased dropped kerbs
	BW.05	Consideration of closure of Cartway from the north to traffic
	BW.06	Consideration of closure of Postern Gate to traffic
	BW.07	Consideration of making St Mary's active travel and access only
Coherence	BW.08	Increase signage between key attractors such as the Railway Station, High Town and Low Town

Table 4-2: Strategic Walking Improvement Recommendations in Bridgnorth Town Centre CWZ



## 5 Prioritisation Results

As explained in the main LCWIP Report, the purpose of the prioritisation process is to help inform which routes or areas could be considered for further development first. The LCWIP Guidance (DfT, 2017) states that proposed schemes should be prioritised based on their ability to ‘have the greatest impact on increasing the number of people who choose to walk and cycle and therefore provide the greatest return on investment.’ It also identifies other factors, including deliverability of schemes or opportunities to integrate with wider schemes, should be considered.

The LCWIP Main Report provides further detail on the Appraisal approach used to inform the prioritisation of schemes.

### 5.1 Top Performing Schemes

Table 5-1 shows the top performing schemes for Bridgnorth; a full list of the prioritisation results for Bridgnorth is shown in Appendix: Full Prioritisation Results.

The top scoring schemes are a mix of short connections which support local movements across barriers and longer distance links connecting into the surrounding villages from the town. The highest scoring scheme is on St John’s Street which will involve the upgrade of the junction with Can Hill Road and Hospital Street to improve safety and crossing facilities.

Scheme	Description	Zero Carbon	Healthier	Mode Shift	Inclusive	Sustainable Growth	Objective Total	Deliverability	Total Score	Local Rank
<b>B.CROSS6</b>	St Johns Street/A442	7.5	5.5	8	7.5	7.5	36	24	<b>60</b>	<b>1</b>
<b>B.23</b>	High street	5.25	6	9	7.5	7.5	35	24	<b>59</b>	<b>=2</b>
<b>B.58</b>	Whitburn Street	5.25	6	7	7.5	6.75	33	26	<b>59</b>	<b>=2</b>
<b>B.22</b>	Northern end of Cartway to through traffic	6	6	9	5.25	7.5	34	24	<b>58</b>	<b>4</b>
<b>B.CROSS4</b>	High Street	6	6	8	7.5	7.5	35	22	<b>57</b>	<b>=5</b>
<b>B.04</b>	Connect bypass (A458) to residential areas and provide connection to the Low Town	6.75	6	7	7.5	7.5	35	22	<b>57</b>	<b>=5</b>
<b>B.CROSS1</b>	St Johns Street in Low Town	7.5	5.5	8	6	7.5	35	22	<b>57</b>	<b>=5</b>
<b>B.13</b>	Route along Innage Lane and North Gate	6	6.5	7	8.25	8.25	36	20	<b>56</b>	<b>=8</b>
<b>B.44</b>	Listley Street	5.25	6	8	6	6.75	32	24	<b>56</b>	<b>=8</b>
<b>B.39</b>	Hollybush Road (B4373)	6	6.5	8	6.75	5.25	33	22	<b>55</b>	<b>10</b>

Table 5-1: Top Performing Schemes in Bridgnorth

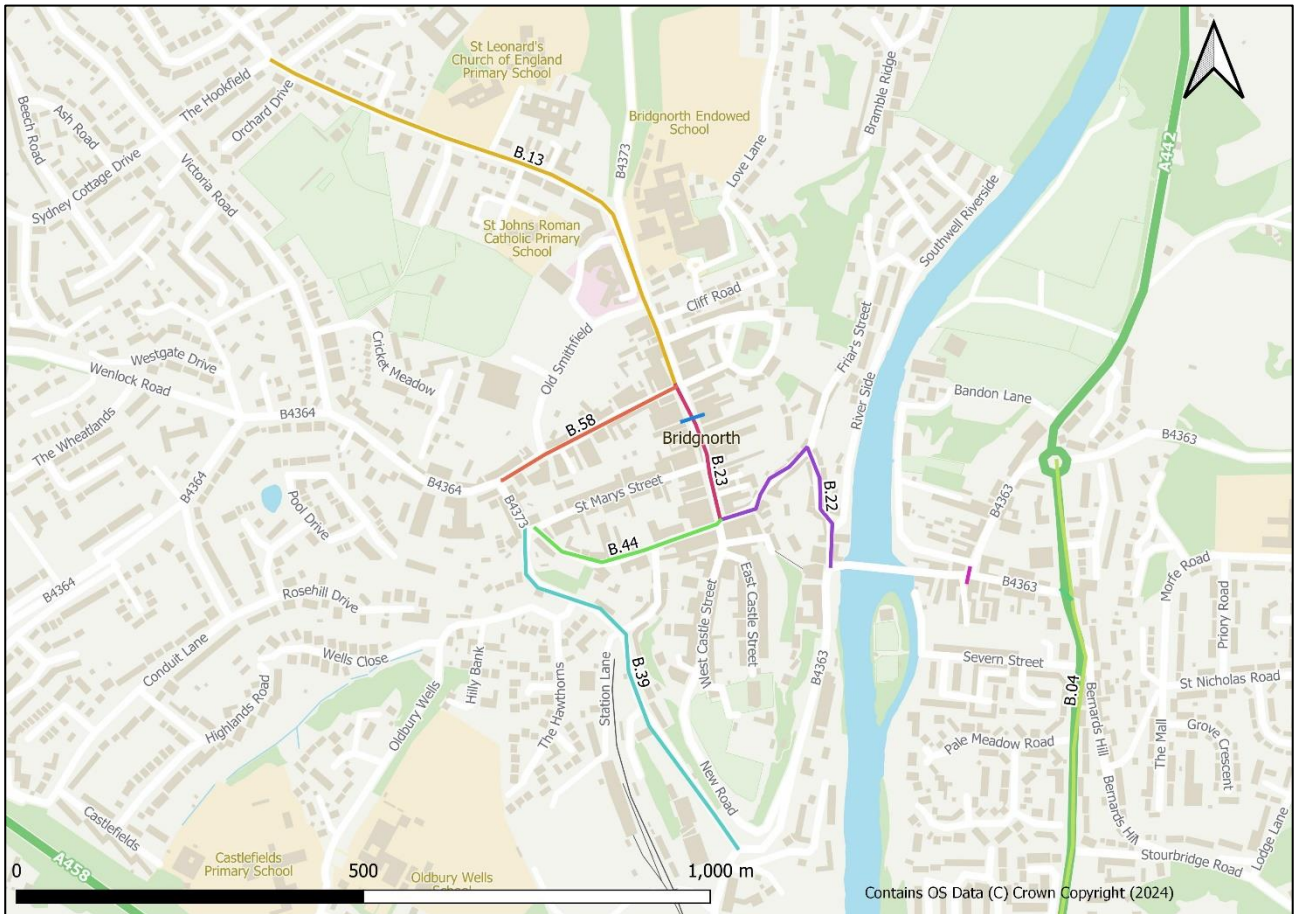


Figure 5-1: Top 10 Scoring Schemes in Bridgnorth

## 5.2 Prioritised Routes

### 5.2.1 Timescales

In line with DfT Guidance, this LCWIP considers a prioritised series of network upgrades across a ten-year period.

Future infrastructure improvement schemes have been categorised as follows:

- **Short Term Network Improvements (2 – 5 years):** ‘*Quick wins*’ which can be delivered relatively easily with limited local opposition, do not rely on other schemes progressing and could be delivered within current or already identified forthcoming funding streams available to Shropshire Council. Schemes can only be categorised as Short Term if they are either in the top 100 schemes over the county or have a score within the top 10 for the town they are in.
- **Medium Term Network Improvements (5 – 8 years):** Schemes that potentially require more than one round of consultation before progression, and are subject to further feasibility assessment and/or reliant on some dependency such as another scheme progressing.
- **Long Term (8 – 10 years):** Schemes that are more challenging to deliver due to the need for more in-depth consultation, noteworthy scheme engineering feasibility challenges and/or are reliant on other schemes progressing.

### 5.2.2 Prioritised Routes

Based on the outcomes of the appraisal and prioritisation process, the recommended delivery timescales for the cycling network are indicated in Figure 5-2.

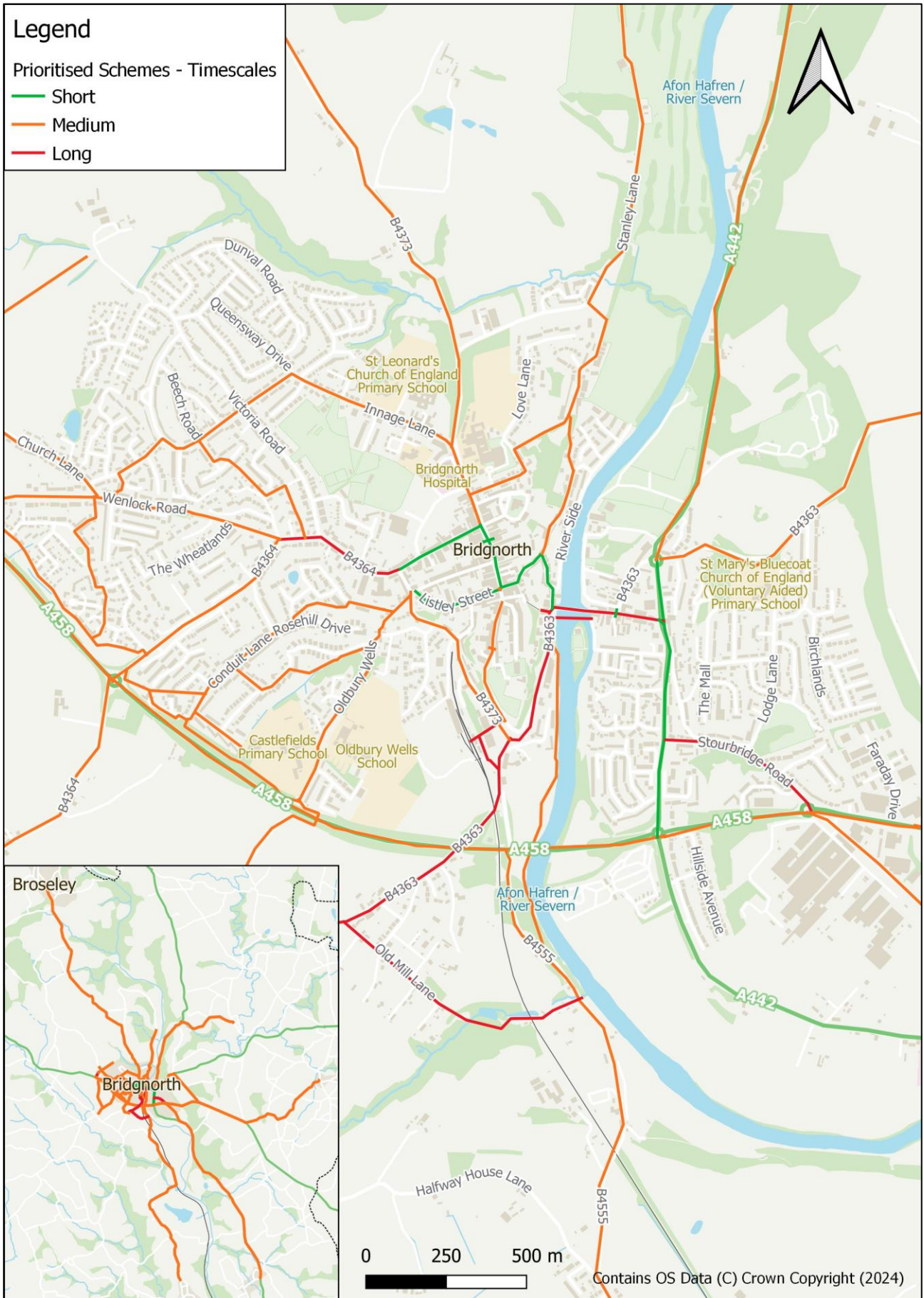


Figure 5-2: Prioritised Schemes in Bridgnorth

## 6 Appendix: Full Prioritisation Results

Scheme	Description	Zero Carbon	Healthier	Mode Shift	Inclusive	Sustainable Growth	Objective Total	Deliverability	Total Score	Local Rank	Time Scale
B.CROSS6	St Johns Street/A442	7.5	5.5	8	7.5	7.5	36	24	<b>60</b>	<b>1</b>	Short
B.23	High street	5.25	6	9	7.5	7.5	35	24	<b>59</b>	<b>=2</b>	Short
B.58	Whitburn Street	5.25	6	7	7.5	6.75	33	26	<b>59</b>	<b>=2</b>	Short
B.22	Northern end of Cartway to through traffic	6	6	9	5.25	7.5	34	24	<b>58</b>	<b>4</b>	Short
B.CROSS4	High Street	6	6	8	7.5	7.5	35	22	<b>57</b>	<b>=5</b>	Short
B.04	Connect bypass (A458) to residential areas and provide connection to the Low Town	6.75	6	7	7.5	7.5	35	22	<b>57</b>	<b>=5</b>	Short
B.CROSS1	St Johns Street in Low Town	7.5	5.5	8	6	7.5	35	22	<b>57</b>	<b>=5</b>	Short
B.13	Route along Innage Lane and North Gate	6	6.5	7	8.25	8.25	36	20	<b>56</b>	<b>=8</b>	Medium
B.44	Listley Street	5.25	6	8	6	6.75	32	24	<b>56</b>	<b>=8</b>	Short
B.39	Hollybush Road (B4373)	6	6.5	8	6.75	5.25	33	22	<b>55</b>	<b>10</b>	Medium
B.26	Connection between Innage Lane and Wenlock Rd (B4364) along Leasowes Close, Racecourse Drive, Sydney Cottage Drive and The Hookfield.	6	5.5	4	6.75	7.5	30	24	<b>54</b>	<b>11</b>	Medium
B.02	Whitburn St - Link into the town centre from the west of Bridgnorth	6.75	6	7	6.75	6.75	33	20	<b>53</b>	<b>=12</b>	Long
B.06	Bridgnorth Bridge - River crossing between High Town and Low Town	6.75	6.5	9	6.75	7.5	37	16	<b>53</b>	<b>12</b>	Long
B.33	Friar's Street	6.75	4.5	5	7.5	6.75	31	22	<b>53</b>	<b>=12</b>	Medium
B.CROSS3	Consider new crossing scheme at Postern Gate/Listley Street junction	6	5.5	8	6	6.75	32	20	<b>52</b>	<b>=15</b>	Medium
B.32	Postern Gate	5.25	6	7	5.25	6	30	22	<b>52</b>	<b>=15</b>	Medium
B.34	Route along Cliff Rd, Love Lane and Bramble Ridge to connect Northgate with Stanley Lane	5.25	5.5	6	6	6.75	30	22	<b>52</b>	<b>=15</b>	Medium
B.38	Church Lane to Tasley, linking in with new development site	6.75	4	3	6.75	6.75	27	24	<b>51</b>	<b>=18</b>	Medium
B.30	Oldbury Wells - linking in to the schools	6.75	6	7	6	5.25	31	20	<b>51</b>	<b>=18</b>	Medium
B.47	B4373 north of Bridgnorth heading to Broseley	6.75	6	7	5.25	6	31	20	<b>51</b>	<b>=18</b>	Medium
B.31	Bridge crossing New Rd to the Bridgnorth Railway Station	6.75	5	5	7.5	4.5	29	22	<b>51</b>	<b>=18</b>	Long

Scheme	Description	Zero Carbon	Healthier	Mode Shift	Inclusive	Sustainable Growth	Objective Total	Deliverability	Total Score	Local Rank	Time Scale
B.28	Route along Wolverhampton Road (B4363) to connect Low Town to Stanmore Industrial Estate	6.75	6	6	4.5	5.25	29	22	<b>51</b>	<b>=18</b>	Medium
B.53	PROW between Friar's Street and Bramble Ridge	6	5	4	7.5	6	29	22	<b>51</b>	<b>=18</b>	Medium
B.16	New pedestrian/cycle bridge across the river	6	6.5	9	6	6.75	34	16	<b>50</b>	<b>=24</b>	Long
B.21	Connection between Sydney Cottage Drive and Westgate	6.75	5	4	5.25	6.75	28	22	<b>50</b>	<b>=24</b>	Medium
B.01	Wenlock Road (west) between A458 and Church Lane	6.75	4.5	5	5.25	6	28	22	<b>50</b>	<b>=24</b>	Medium
B.37	Rose Lane and Conduit Lane	6.75	6	6	5.25	5.25	29	20	<b>49</b>	<b>=27</b>	Medium
B.CROSS2	West Castle St/New Rd	6	6	6	6	5.25	29	20	<b>49</b>	<b>=27</b>	Medium
B.24	Connection from Alveley to Bridgnorth along the A442 through Danesford, Quatford and Quatt	7.5	6	4	4.5	6	28	20	<b>48</b>	<b>=29</b>	Medium
B.45	A458 between Wenlock Road and Ludlow Road	6.75	4.5	4	4.5	6	26	22	<b>48</b>	<b>=29</b>	Medium
B.46	A458 from Low Town to the business park	6.75	5	5	5.25	7.5	30	18	<b>48</b>	<b>=29</b>	Medium
B.29	PROW parallel to A458 from Ludlow Road to Oldbury Wells	6.75	4.5	4	6	5.25	27	20	<b>47</b>	<b>=32</b>	Medium
B.43	Route along Highlands Road and the PROW connecting into Oldbury Wells	6	5	5	5.25	5.25	27	20	<b>47</b>	<b>=32</b>	Medium
B.08	Connecting Oldbury to the town centre via Oldbury Rd, including crossing of the bypass	6.75	5	6	6	4.5	28	18	<b>46</b>	<b>=34</b>	Long
B.11	Provide connection from residential area west of the town centre to the town centre along Ludlow Road	6.75	5.5	5	3.75	5.25	26	20	<b>46</b>	<b>=34</b>	Medium
B.56	Wenlock Road (central) between Church Lane and Westland Drive	6.75	4.5	5	6	6	28	18	<b>46</b>	<b>=34</b>	Medium
B.41	Route through residential area west of town centre along PROW, Tavistock Close, Roundthorn Close and Maudlins Close	6.75	4.5	3	5.25	4.5	24	22	<b>46</b>	<b>=34</b>	Medium
B.35	Castlefields	6.75	4.5	4	6	4.5	26	20	<b>46</b>	<b>=34</b>	Medium
B.40	PROW running parallel to the A458, between Ludlow Rd and Wenlock Rd	6.75	5.5	3	4.5	6	26	20	<b>46</b>	<b>=34</b>	Medium

Scheme	Description	Zero Carbon	Healthier	Mode Shift	Inclusive	Sustainable Growth	Objective Total	Deliverability	Total Score	Local Rank	Time Scale
B.50	A442 Mill St/Bridgnorth Road between the Mill St (B4363)/Wolverhampton Rd/Cann Hill Rd roundabout, connecting into B.49	7.5	5	6	6	5.25	30	16	<b>46</b>	<b>=34</b>	Medium
B.09	Alternative route to the river route (B.15), provides bypass of the town centre and links to railway station, along Underhill Street	5.25	6	7	6	5.25	30	16	<b>46</b>	<b>=34</b>	Long
B.14	Connecting the river route to the bypass (A458) via the Cankhorn	6	4	5	6	4.5	26	20	<b>46</b>	<b>=34</b>	Medium
B.05	Crossing of bypass (A458) from new residential area (Tasley Garden Village) to future employment area (Land at Tasley south of the A458 bypass)	6	4	4	5.25	6	25	20	<b>45</b>	<b>=43</b>	Long
B.07	Route from the A442 to the Industrial Park along Stourbridge Rd.	6.75	4.5	4	5.25	6.75	27	18	<b>45</b>	<b>=43</b>	Long
B.12	Connection between the Tasley Garden Village development to future employment zone.	6.75	4	3	3.75	5.25	23	22	<b>45</b>	<b>=43</b>	Medium
B.20	Connection from Oldbury along Manor Farm Lane to Oldbury Wells school	6.75	4.5	4	6	5.25	27	18	<b>45</b>	<b>=43</b>	Medium
B.48	B4373 passing through Cross Lane Head	7.5	4	4	4.5	4.5	25	20	<b>45</b>	<b>=43</b>	Medium
B.42	Connection along the PROW linking into Conduit Lane	6	4.5	4	5.25	4.5	24	20	<b>44</b>	<b>=48</b>	Medium
B.57	Wenlock Road (east) between Ludlow Road and Westland Drive	6.75	4.5	6	3.75	5.25	26	18	<b>44</b>	<b>=48</b>	Medium
B.15	Connecting Oldbury to the river route which links north to the town centre, alternative route to scheme B.08	6.75	5.5	6	5.25	4.5	28	16	<b>44</b>	<b>=48</b>	Medium
B.54	Oldbury Road to Bridgnorth Railway Station	6	4.5	5	7.5	4.5	28	16	<b>44</b>	<b>=48</b>	Long
B.03	Central section of the bypass (A458)	6.75	4.5	6	6	6	29	14	<b>43</b>	<b>=52</b>	Medium
B.17	Rural route between A442/Rindleford Junction and Worfield.	7.5	5	4	3.75	3	23	20	<b>43</b>	<b>=52</b>	Medium
B.18	Connection between Bridgnorth and Broseley along the B4373.	6.75	6.5	3	3.75	5.25	25	18	<b>43</b>	<b>=52</b>	Medium
B.59	Stanley Lane between Bramble Ridge and the Little Severn Community Hall.	6.75	5	3	5.25	4.5	25	18	<b>43</b>	<b>=52</b>	Medium
B.36	North-south link through the Tasley Garden village site	7.5	4	3	4.5	5.25	24	18	<b>42</b>	<b>=56</b>	Medium

Scheme	Description	Zero Carbon	Healthier	Mode Shift	Inclusive	Sustainable Growth	Objective Total	Deliverability	Total Score	Local Rank	Time Scale
B.27	Connection into the Stanmore Industrial Estate and Country Park along the A454	6.75	5.5	4	4.5	5.25	26	16	<b>42</b>	<b>=56</b>	Medium
B.19	Connection from Highley to Bridgnorth along the B4555 through Eardington, Chelmarsh and Chelmarsh Common	6.75	6	5	3.75	3.75	25	16	<b>41</b>	<b>=58</b>	Medium
B.25	Connection from Claverley to Bridgnorth along the A458	6.75	5	4	5.25	6	27	14	<b>41</b>	<b>=58</b>	Medium
B.49	A442 Bridgnorth Road to Rindleford Junction	7.5	4	4	5.25	3	24	16	<b>40</b>	<b>60</b>	Medium
B.10	Link from the bypass (A458) to the Tasley Garden Village development to the south west of Bridgnorth.	6.75	4	4	3.75	4.5	23	16	<b>39</b>	<b>61</b>	Medium
B.51	Old Mill Lane between Oldbury Road and the B4555	6.75	4	4	3.75	5.25	24	12	<b>36</b>	<b>62</b>	Long

Table 6-1: Full Prioritisation Results for Bridgnorth



## 7 References

DfT, 2017. *Local Cycling & Walking Infrastructure Plans: Technical Guidance for Local Authorities*. [Online]

Available at:  
[https://assets.publishing.service.gov.uk/government/uploads/system/uploads/attachment\\_data/file/908535/cycling-walking-infrastructure-technical-guidance-document.pdf](https://assets.publishing.service.gov.uk/government/uploads/system/uploads/attachment_data/file/908535/cycling-walking-infrastructure-technical-guidance-document.pdf)

DfT, 2020. *Cycle Infrastructure Design: Local Transport Note 1/20*, s.l.: s.n.

Nomis, 2011. *Method of Travel to Work*. [Online]  
Available at: <https://www.nomisweb.co.uk/census/2011/qs701ew>  
[Accessed 21 06 2022].

ONS, 2015. *Mid-Year Population Estimates*, s.l.: s.n.